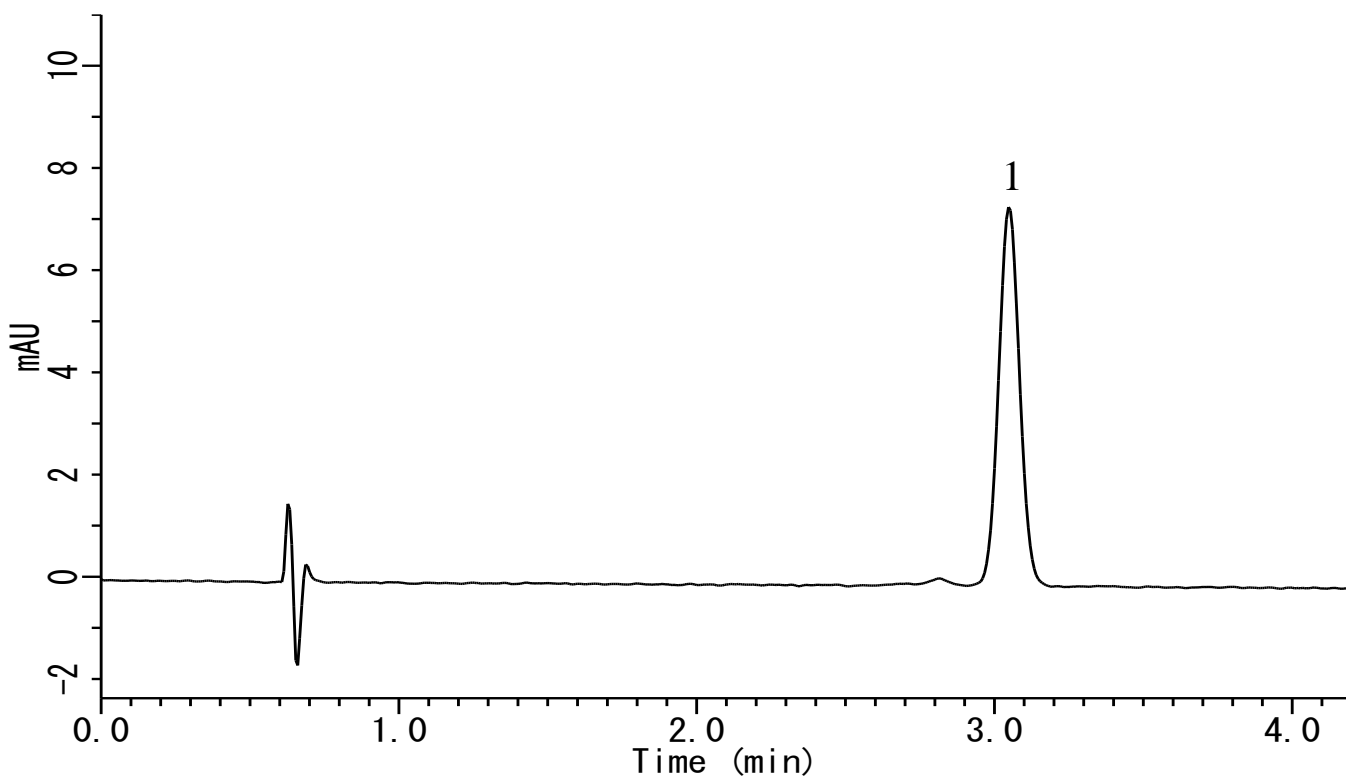


Analysis of Tocopherol acetate



Conditions

System : GL-7400 HPLC system
Column : Inertsil ODS-4 (3 μ m, 100 x 3.0 mm I.D.)
Column Cat. No. : 5020-04024
Eluent : A) CH₃CN
 B) CH₃OH
 A/B = 80/20, v/v
Flow rate : 0.8 mL/min
Col. Temp. : 40 °C
Detection : UV 285 nm (GL-7452A PDA Detector)
Injection Vol. : 5 μ L
Sample : Tocopherol acetate

Analyte:

1. Tocopherol acetate 50 mg/L