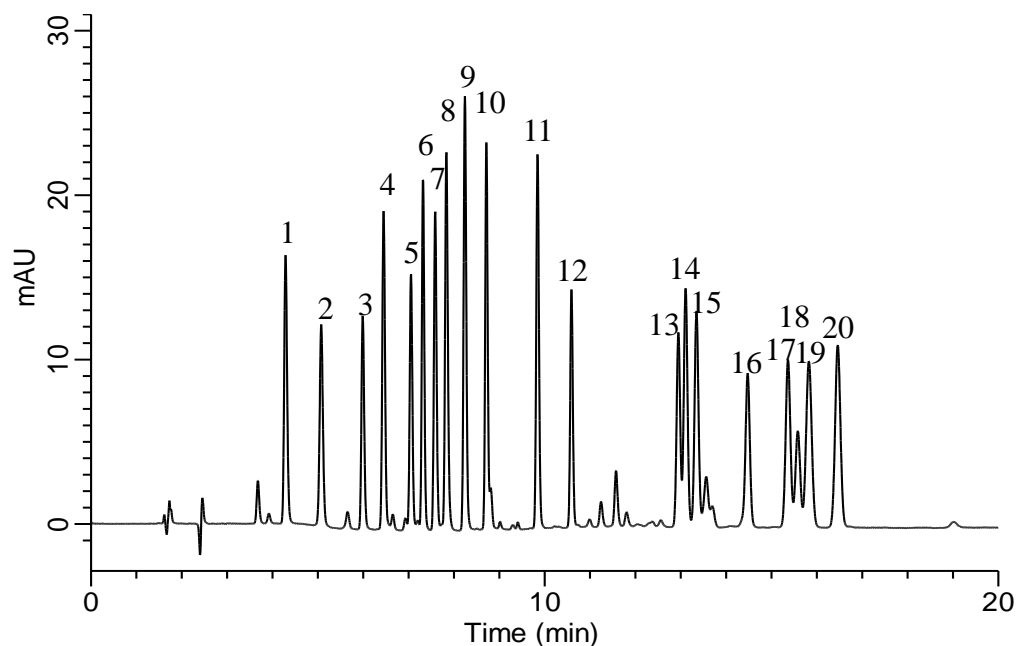


## Analysis of PTH-Amino acids



### Conditions

**System** : GL-7400 HPLC system  
**Column** : Inertsil ODS-4 HP (3 $\mu$ m, 250 x 3.0 mm I.D.)  
**Column Cat. No.** : 5020-14006  
**Eluent** : A) CH<sub>3</sub>CN  
           B) 10 mM NH<sub>4</sub>H<sub>2</sub>PO<sub>4</sub> (pH 2.5, H<sub>3</sub>PO<sub>4</sub>)  
           A/B = 20/80 – 7 min – 47/53 – 13 min – 47/53, v/v  
**Flow rate** : 0.6 mL/min  
**Col. Temp.** : 50 °C  
**Detection** : UV 254 nm (GL-7452A PDA Detector)  
**Injection Vol.** : 2  $\mu$ L  
**Sample** : PTH-amino acids

### Solutes:

1.	Histidine	(His)	20 mg/L
2.	Cysteic acid	(-)	25 mg/L
3.	Arginine	(Arg)	20 mg/L
4.	Asparagine	(Asn)	20 mg/L
5.	Glutamine	(Gln)	20 mg/L
6.	Tyrosine	(Tyr)	20 mg/L
7.	Aspartic acid	(Asp)	20 mg/L
8.	Glutamic acid	(Glu)	25 mg/L
9.	Glycine	(Gly)	20 mg/L
10.	Threonine	(Thr)	20 mg/L
11.	Alanine	(Ala)	20 mg/L
12.	Serine	(Ser)	20 mg/L
13.	Methionine	(Met)	20 mg/L
14.	Valine	(Val)	20 mg/L
15.	Proline	(Pro)	20 mg/L
16.	Tryptophan	(Trp)	25 mg/L
17.	Phenylalanine	(Phe)	25 mg/L
18.	Lysine	(Lys)	10 mg/L
19.	Isoleucine	(Ile)	20 mg/L
20.	Leucine	(Leu)	25 mg/L