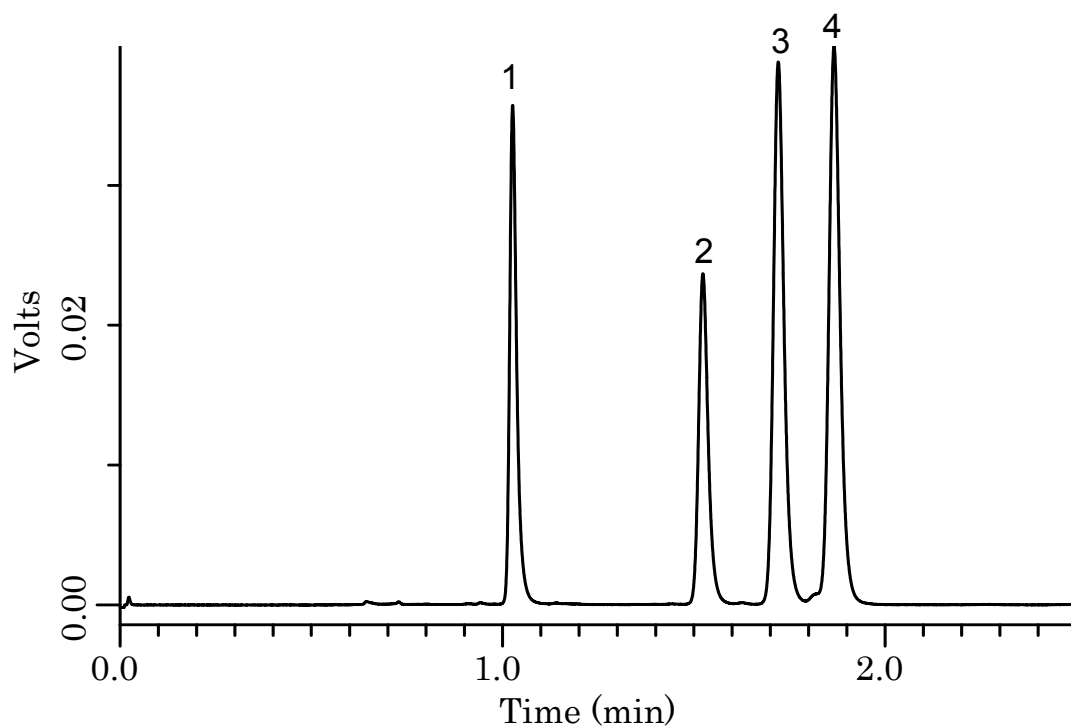


InertSearch™ for LC

Inertsil® Applications

Analysis of Estrogen

Data No. LA822-0699



Conditions

Column : MonoClad C18-HS (150 x 3.0 mm I.D.)

Column Cat. No. : 5020-10803

Eluent : A) CH₃CN
B) H₂O
A/B = 50/50, v / v

Flow Rate : 1 mL/min

Col. Temp. : 40 °C

Detection : UV 220 nm

Injection Vol. : 1 µL

Analyte

1. Estriol (0.05 mg/mL)

2. Estradiol (0.05 mg/mL)

3. Ethynylestradiol (0.1 mg/mL)

4. Estrone (0.05 mg/mL)