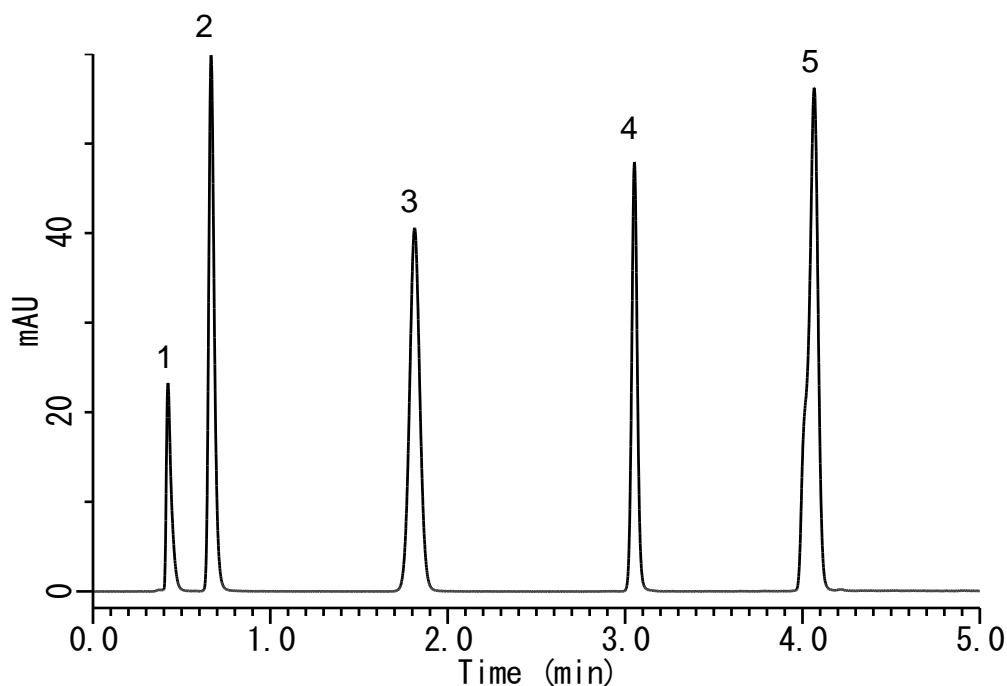


## Analysis of Sweeteners



### Conditions

**System** : GL-7400 HPLC System  
**Column** : MonoClad C18-HS (50 x 3.0 mm I.D.)  
**Column Cat. No.** : 5020-10801  
**Eluent** : A) CH<sub>3</sub>CN  
           B) 0.1 % TFA in H<sub>2</sub>O  
           A/B = 2/98 - 4 min - 30/70, v/v  
**Flow Rate** : 1 mL/min  
**Col. Temp.** : UV 210 nm (GL-7450 UV Detector)  
**Detection** : 40 °C  
**Injection Vol.** : 10 µL

### Analyte

1. Uracil	(0.006 mg/mL)
2. Acesulfame	(0.061 mg/mL)
3. Saccharine	(0.055 mg/mL)
4. Caffeine	(0.046 mg/mL)
5. Aspartame	(0.31 mg/mL)