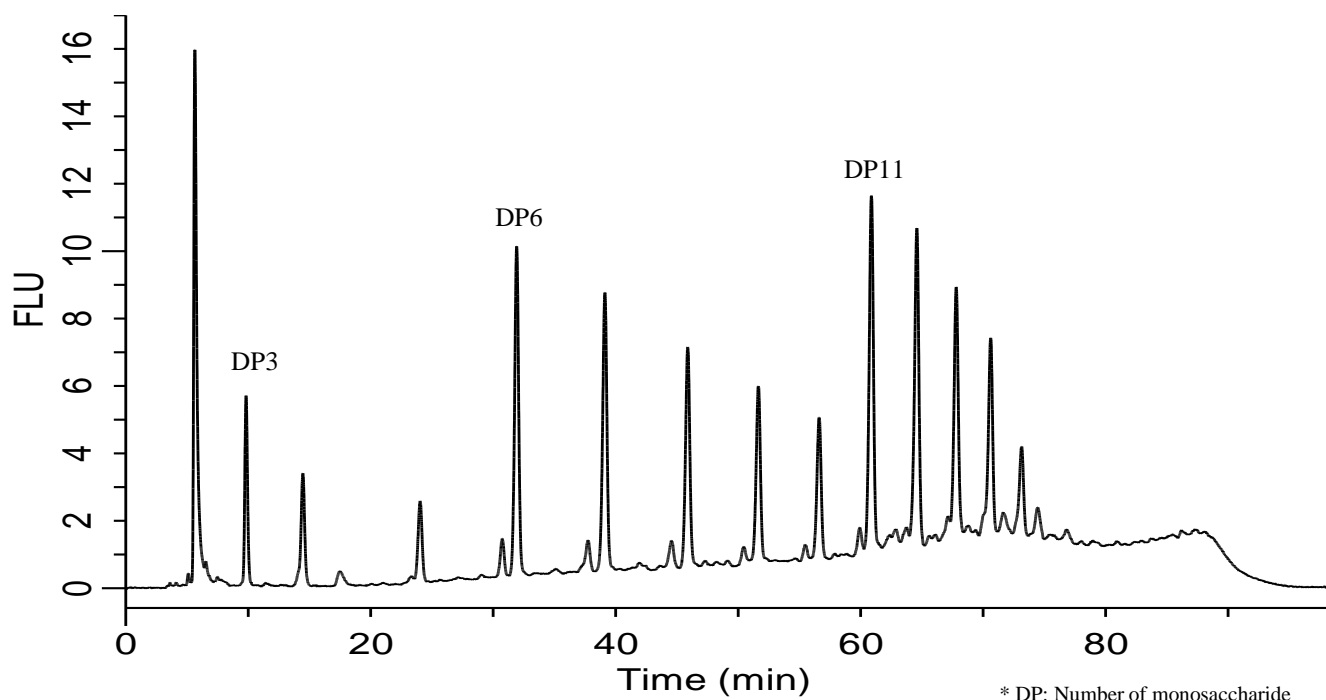


## Analysis of PA(Pyridylaminated) oligosaccharides



### Conditions

<b>System</b>	: GL-7400 HPLC System
<b>Column</b>	: MonoClad C18-HS (150 x 3.0 mm I.D.)
<b>Column Cat. No.</b>	: 5020-10803
<b>Eluent</b>	: A) CH <sub>3</sub> CN/ H <sub>2</sub> O/TFA = 20/80/0.02 B) H <sub>2</sub> O/TFA = 100/0.02 A/B = 0/100 - 5 min - 0/100 - 65 min - 10/90 - 10 min - 15/85, v/v
<b>Flow Rate</b>	: 0.3 mL/min
<b>Col. Temp.</b>	: FL Ex 310 nm Em 380 nm (GL-7453A FL Detector)
<b>Detection</b>	: 30 °C
<b>Injection Vol.</b>	: 5 µL
<b>Sample</b>	: PA-Glucose oligomer (DP = 3 - 15)