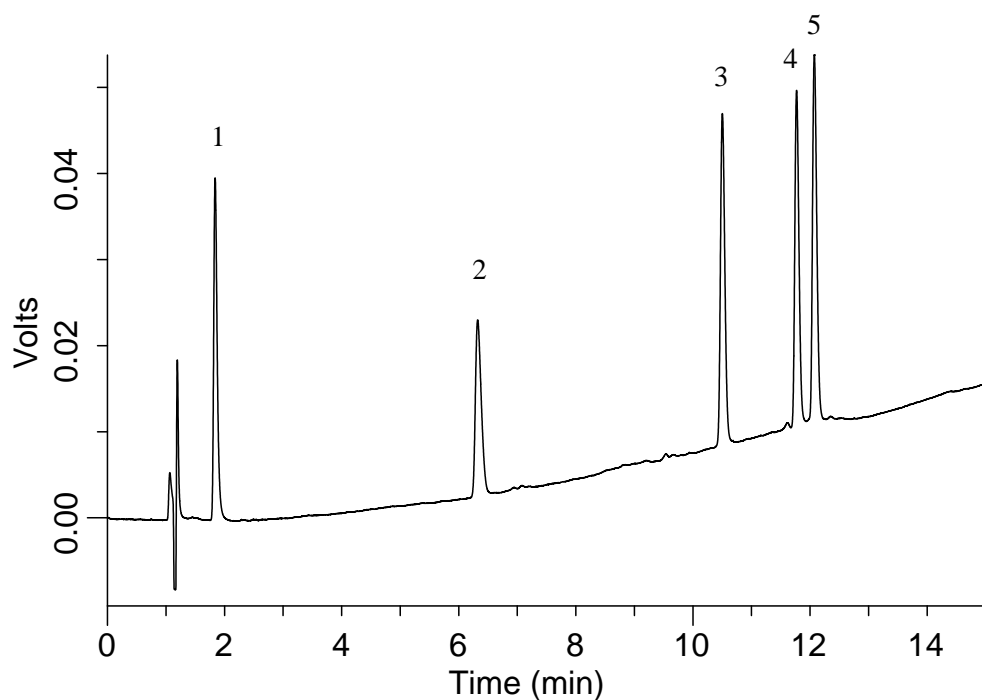


# InertSearch™ for LC

Inertsil® Applications

## Analysis of Peptides

Data No. LA837-0700



### Conditions

**System** : AccuStream Capillary HPLC system  
**Column** : MonoCap C18 Fast-flow (150 x 0.2 mm I.D.)  
**Column Cat. No.** : 5020-10161  
**Eluent** : A) 0.1 % TFA in CH<sub>3</sub>CN  
          : B) 0.1 % TFA in H<sub>2</sub>O  
          : A/B = 10/90 - 15 min - 40/60, v/v  
**Flow rate** : 5 μL/min  
**Col. Temp.** : Ambient  
**Detection** : UV 210 nm (MU701 18 nl cell)  
**Injection Vol.** : 100 nL  
**Analyte** : Peptides

### Solutes:

1. Gly-Tyr
2. Val-Tyr-Val
3. Methionine Enkephalin
4. Leucine Enkephalin
5. Angiotensin II