

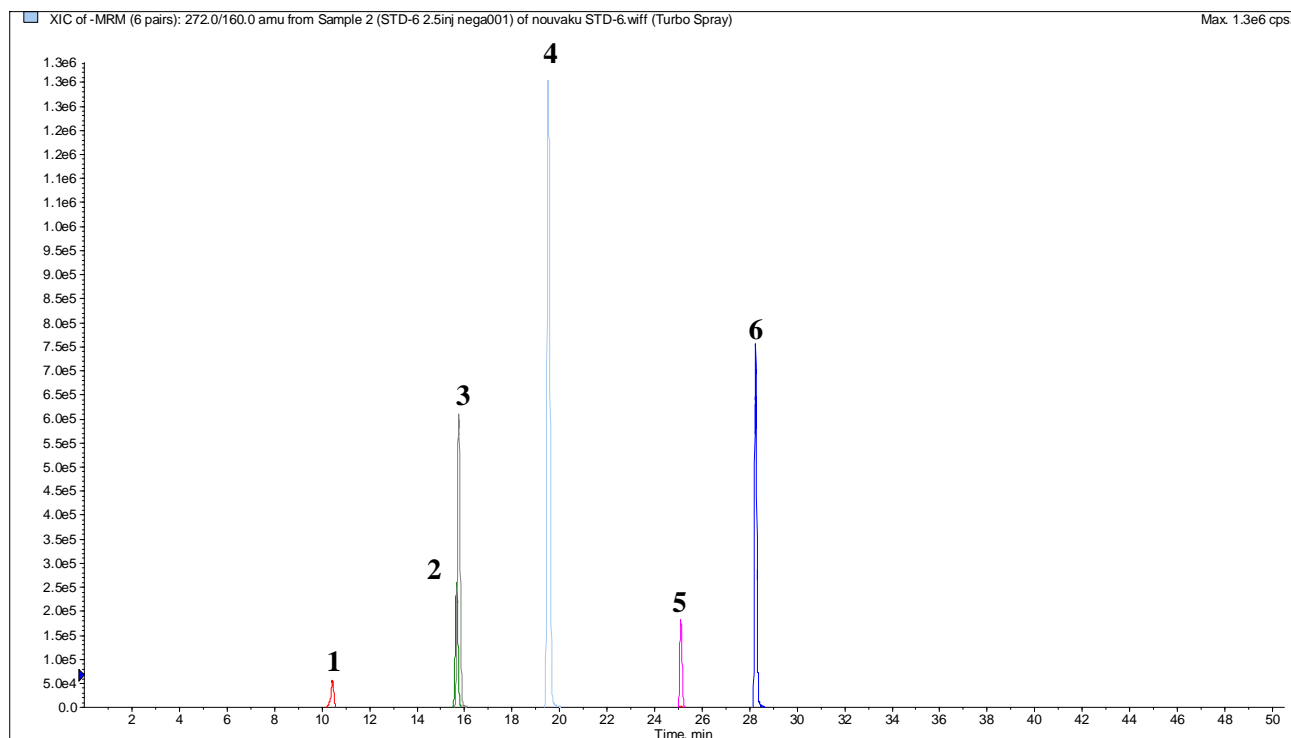
InertSearch™ for LC

Inertsil® Applications

Analysis of 6 Pesticides

Data No. LA844-0811

This sample was provided by Dr. Kiwao KADOKAMI (The University of Kitakyushu, Japan)



Conditions

System : LC800 HPLC system
4000 Q TRAP®

Column : Inertsil ODS-4 HP (3 μm, 150 x 2.1 mm I.D.)

Column Cat. No. : 5020-14002

Eluent : A) 5 mmol CH₃COONH₄ in CH₃OH
B) 5 mmol CH₃COONH₄ in H₂O
A/B = 5/95 -30 min- 95/5 -20 min- 95/5 ,v/v

Flow rate : 0.3 mL/min

Col. Temp. : 40 °C

Detection : LC/MS/MS (4000Q TRAP®: ESI, Negative, MRM)

CUR	CAD	IS	TEM	GS1	GS2
40	4	-4000	600	50	80

Injection Vol. : 2.5 μL
Sample : Pesticides

Analyte:

Analyte	Q1/Q3	Concentration (μg/mL)
1. Gibberellic acid	345/143	(1 μg/mL)
2. (2,4-dichlorophenoxy)acetic acid	219/161	(1 μg/mL)
3. (4-chloro-2-methylphenoxy)acetic acid	199/141	(1 μg/mL)
4. Cyclanilide	272/160	(1 μg/mL)
5. Oryzalin	345/78	(1 μg/mL)
6. Hexaflumuron	459/439	(1 μg/mL)

Related No. : LA843