

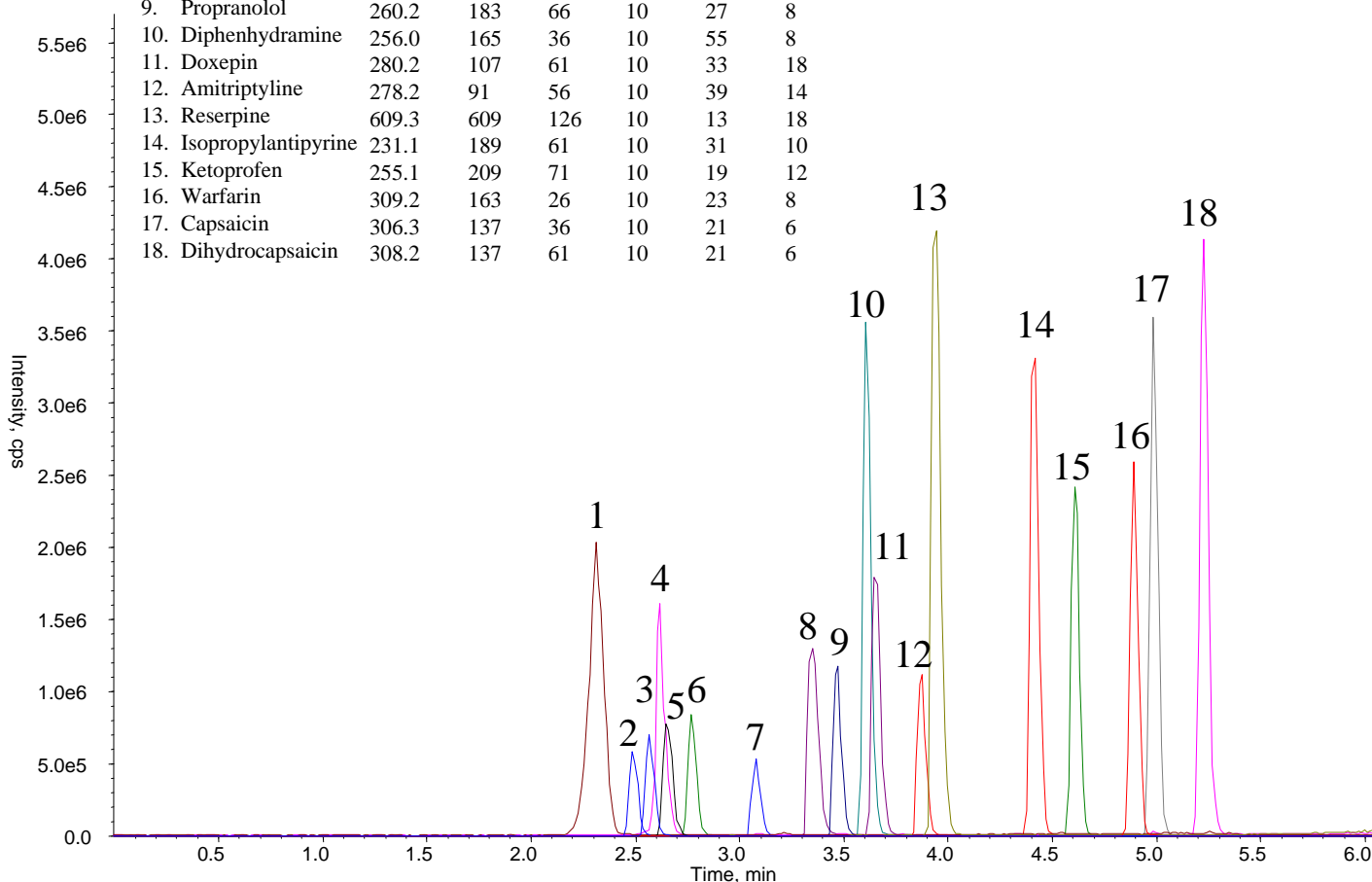
InertSearch™ for LC

Inertsil® Applications

Analysis of 18 Drugs

Data No. LA854-0696

Analyte :	Q1	Q3	DP	EP	CE	CXP
1. Ranitidine	315.2	315	46	10	9	16
2. Theophylline	181.1	124	66	10	27	6
3. Acetaminophen	152.0	110	61	10	23	4
4. Naltrexone	342.2	324	76	10	31	6
5. Scopolamine	304.2	138	61	10	29	6
6. Caffeine	195.1	138	31	10	27	6
7. Metoprolol	268.2	116	71	10	27	4
8. Chlorpheniramine	230.0	167	101	10	47	8
9. Propranolol	260.2	183	66	10	27	8
10. Diphenhydramine	256.0	165	36	10	55	8
11. Doxepin	280.2	107	61	10	33	18
12. Amitriptyline	278.2	91	56	10	39	14
13. Reserpine	609.3	609	126	10	13	18
14. Isopropylantipyrine	231.1	189	61	10	31	10
15. Ketoprofen	255.1	209	71	10	19	12
16. Warfarin	309.2	163	26	10	23	8
17. Capsaicin	306.3	137	36	10	21	6
18. Dihydrocapsaicin	308.2	137	61	10	21	6



Conditions

System : LC800 HPLC system
Column : Inertsil ODS-4 HP (3 μ m, 150 x 2.1 mm I.D)
Column Cat. No. : 5020-14002
Eluent : A) CH₃CN
B) 0.1% HCOOH in H₂O
A/B = 5/95 – 5 min – 95/5 – 2.5 min , v/v
Flow Rate : 0.4 mL/min
Col. Temp. : 40 °C
Detection : LC/MS/MS (4000Q TRAP® : ESI, Positive, MRM)

CUR	CAD	IS	TEM	GS1	GS2
20	8	5500	700	60	30

Injection Vol. : 5 μ L
Sample : Drugs