

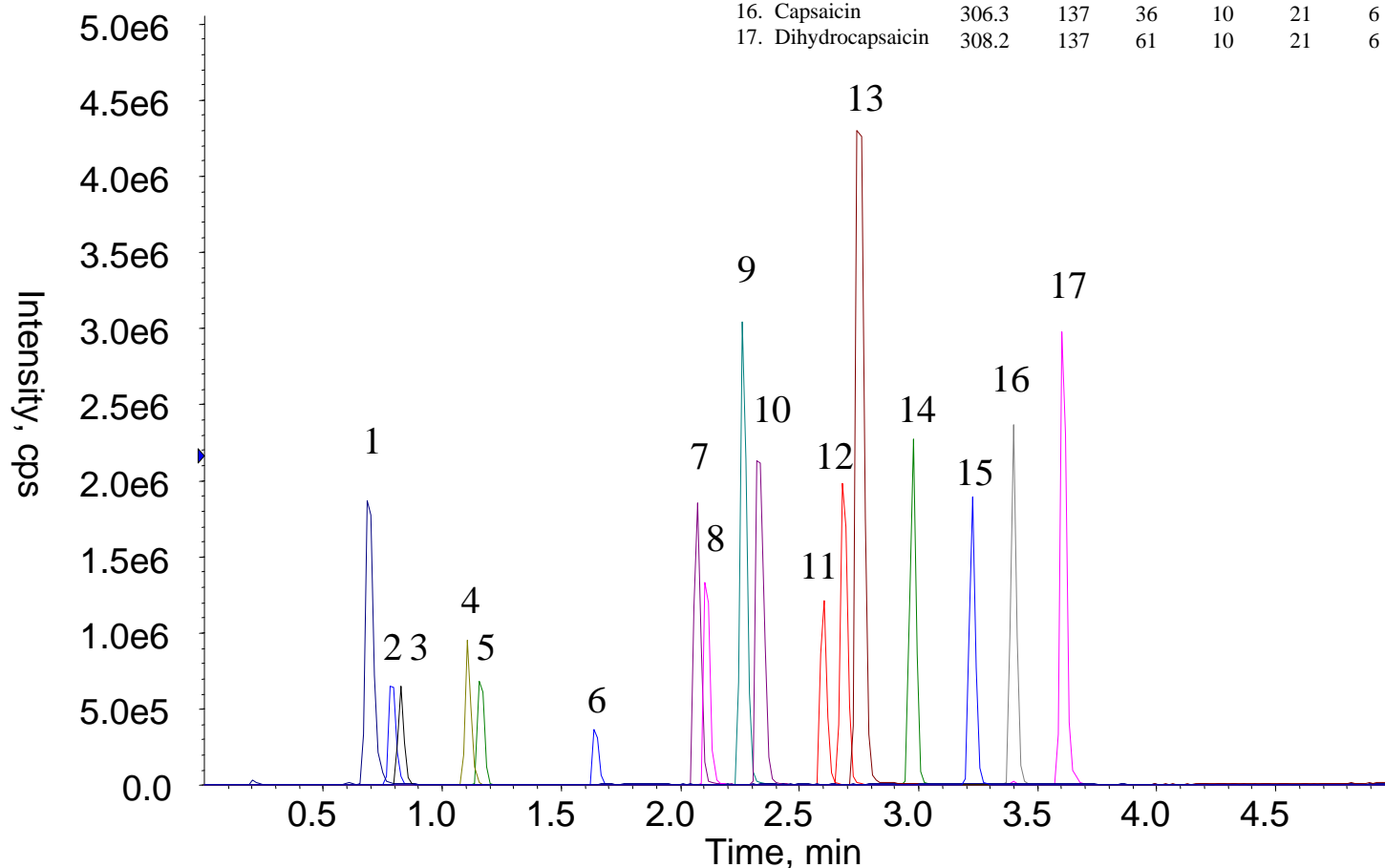
# InertSearch™ for LC

Inertsil® Applications

## Analysis of 17 Drugs

Data No. LA855-0696

Analyte :	Q1	Q3	DP	EP	CE	CXP
1. Ranitidine	315.2	315	46	10	9	16
2. Acetaminophen	152.0	110	61	10	23	4
3. Theophylline	181.1	124	66	10	27	6
4. Scopolamine	304.2	138	61	10	29	6
5. Caffeine	195.1	138	31	10	27	6
6. Metoprolol	268.2	116	71	10	27	4
7. Chlorpheniramine	230.0	167	101	10	47	8
8. Propranolol	260.2	183	66	10	27	8
9. Diphenhydramine	256.0	165	36	10	55	8
10. Doxepin	280.2	107	61	10	33	18
11. Amitriptyline	278.2	91	56	10	39	14
12. Isopropylantipyrine	231.1	189	61	10	31	10
13. Reserpine	609.3	609	126	10	13	18
14. Ketoprofen	255.1	209	71	10	19	12
15. Warfarin	309.2	163	26	10	23	8
16. Capsaicin	306.3	137	36	10	21	6
17. Dihydrocapsaicin	308.2	137	61	10	21	6



### Conditions

**System** : LC800 HPLC system  
**Column** : Inertsil ODS-4 (2  $\mu$  m, 75 x 2.1 mm I.D.)  
**Column Cat. No.** : 5020-81203  
**Eluent** : A) CH<sub>3</sub>CN  
B) 0.05 % HCOOH in H<sub>2</sub>O  
A/B = 10/90 – 5 min – 95/5 , v/v  
**Flow Rate** : 750  $\mu$  mL/min  
**Col. Temp.** : 50 °C  
**Detection** : LC/MS/MS (4000Q TRAP® : ESI, Positive, MRM)

CUR	CAD	IS	TEM	GS1	GS2
20	8	5500	700	60	30

**Injection Vol.** : 10  $\mu$  L  
**Sample** : Drugs