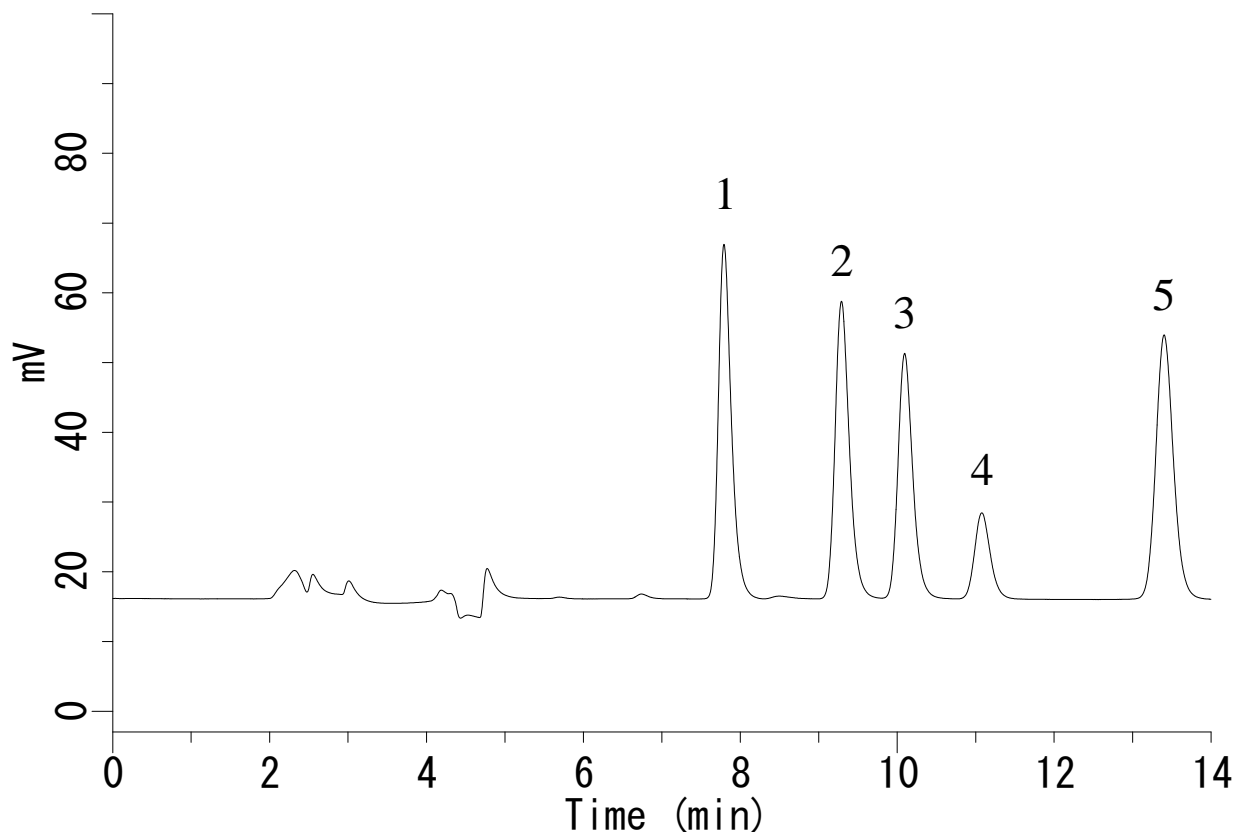


# InertSearch™ for LC

Inertsil® Applications

## Analysis of Catecholamines

Data No. LA856-0871



### Conditions

**System** : LC700 HPLC system  
**Column** : Inertsil ODS-4 (5  $\mu$  m, 250 x 3.0 mm I.D.)  
**Column Cat. No.** : 5020-03926  
**Eluent** : A) CH<sub>3</sub>CN  
B) 20 mM Sodium acetate + 20 mM citric acid  
+ 0.5 g/L IPCC-07 in water  
(IPCC-07 : Sodium 1-Heptane sulfonate)  
A/B = 10/100, v/v (Premix)

**Flow rate** : 0.4 mL/min

**Col. Temp.** : 35 °C

**Detection** : ECD 1000 mV vs. Ag/AgCl (ED703 ECDetector , Diamond)

**Injection Vol.** : 20  $\mu$  L

**Sample** : Catecholamines

### Analyte:

1. Norepinephrine	(100 $\mu$ g/L)
2. Epinephrine	(100 $\mu$ g/L)
3. 3,4-Dihydroxybenzylamine	(100 $\mu$ g/L)
4. 3,4-Dihydroxyphenylacetic acid	(100 $\mu$ g/L)
5. Dopamine	(100 $\mu$ g/L)