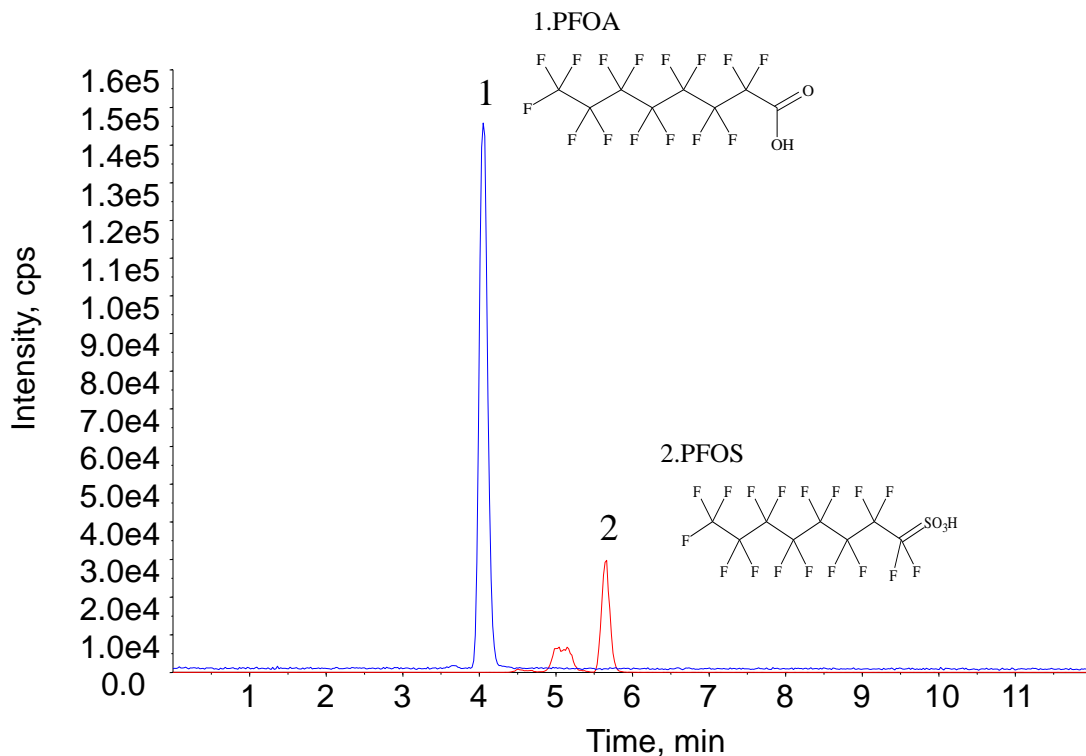


Analysis of PFOS and PFOA



Conditions

System : LC800 HPLC system
 4000 Q TRAP™

Column : Inertsil ODS-4 (3 μm, 100 x 2.1 mm I.D.)

Column Cat. No. : 5020-04014

Eluent : A) 5 mM CH₃COONH₄ in H₂O
 B) 5 mM CH₃COONH₄ in CH₃OH
 A/B = 40/60 – 8 min – 25/75 – 0.1min –
 10/90 – 1.9 min – 10/90 – 0.1 min –
 40/60 – 4.9 min – 10/90, v/v

Flow rate : 0.6 mL/min

Col. Temp. : 40 °C

Detection : LC/MS/MS (4000 Q TRAP™: ESI, Negative, MRM)
 CUR CAD IS TEM GS1 GS2 ihe
 10 4 -4500 700 20 10 on

Injection Vol. : 2 μL

Analyte : PFCs

Analyte:

1. PFOA (Perfluorooctanoic acid)	(1 mg/L)
2. PFOS (Perfluorooctanesulfonic acid)	(1 mg/L)

	Q1	Q3	DP	EP	CE	CXP
PFOA	412.9	368.6	-30	-10	-16	-11
PFOS	499.0	79.7	-70	-10	-92	-3