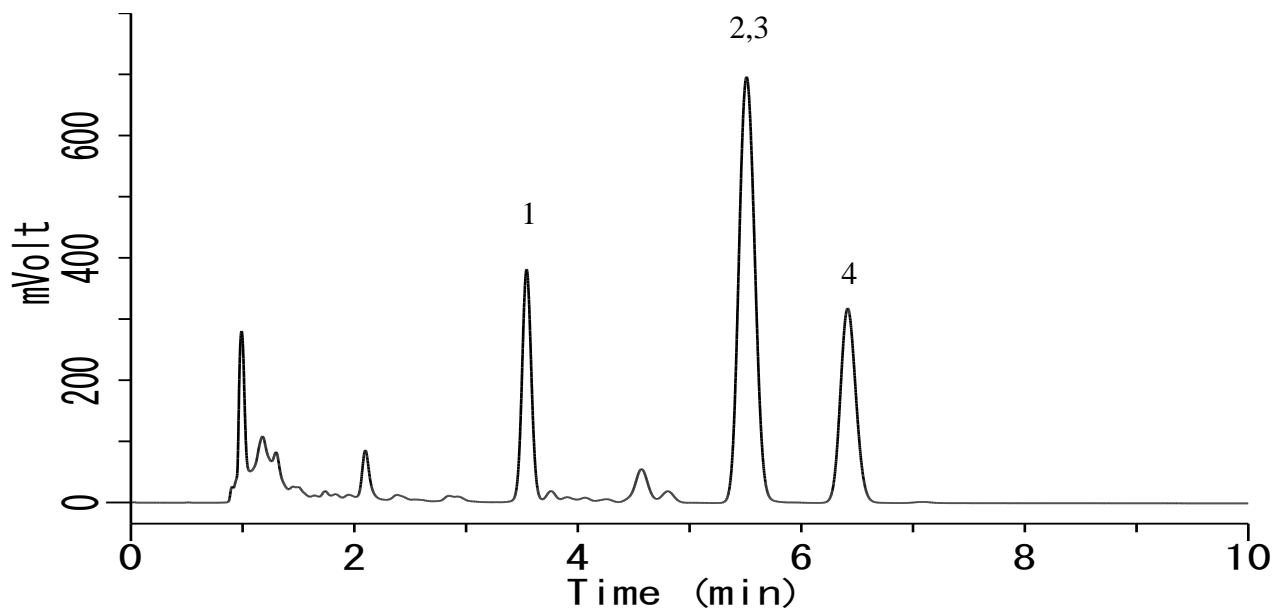


## Analysis of Phytosterols (Inertsil ODS-SP)



### Conditions

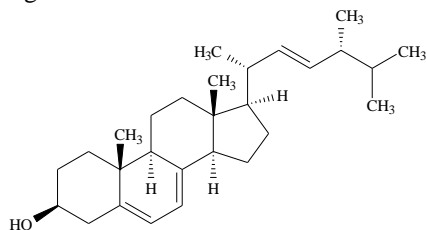
**System** : LC800 HPLC system  
**Column** : Inertsil ODS-SP HP (3 $\mu$ m, 150 x 2.1 mm I.D.)  
**Column Cat. No.** : 5020-14022  
**Eluent** : A) CH<sub>3</sub>CN  
           B) H<sub>2</sub>O  
           A/B = 95/5, v/v  
**Flow rate** : 0.4 mL/min  
**Col. Temp.** : 40 °C  
**Detection** : UV 205 nm (GL-7452A PDA Detector)  
**Injection Vol.** : 2  $\mu$ L  
**Sample** : Phytosterol

### Solutes:

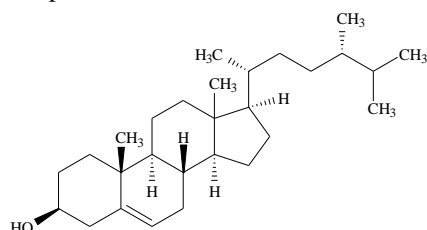
1.	Ergosterol	(1 mg/mL)
2.	Campesterol	(1 mg/mL)
3.	Stigmasterol	(1 mg/mL)
4.	$\beta$ -Sitosterol	(1 mg/mL)

## Analysis of Phytosterol(Inertsil ODS-SP)

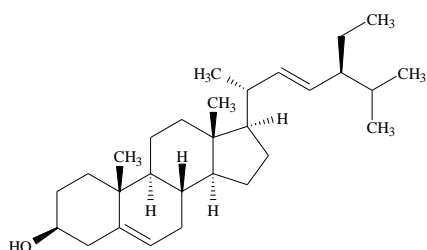
1. Ergosterol



2. Campesterol



3. Stigmasterol



4.  $\beta$ -Sitosterol

