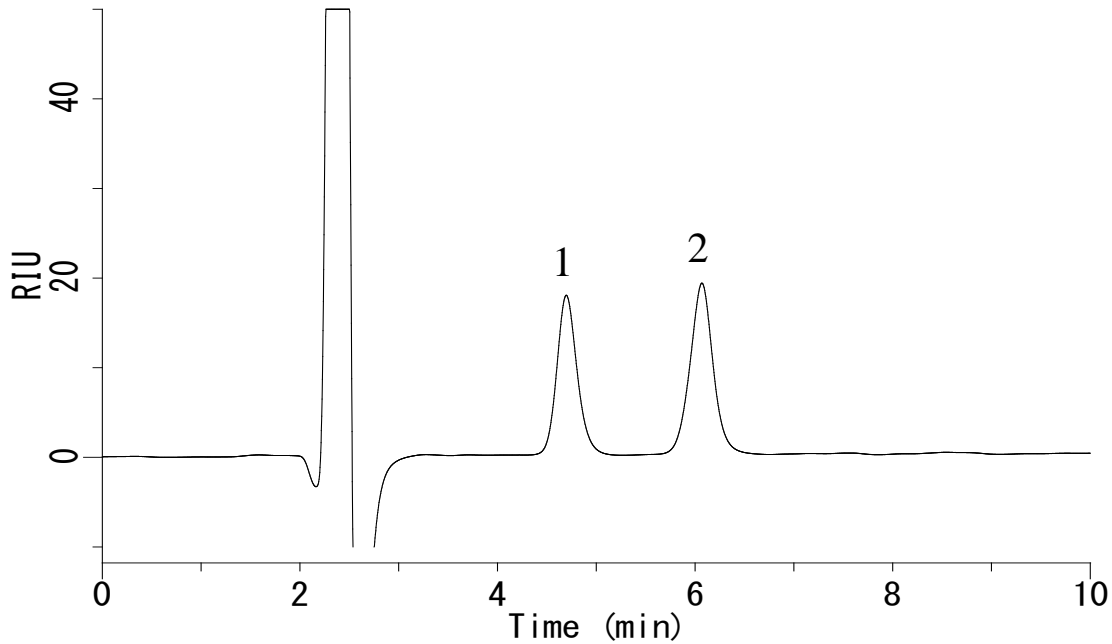


Analysis of Taurine and Inositol



Conditions

System : GL-7400 HPLC system
Column : Inertsil HILIC (5 μ m, 150 x 3.0 mm I.D.)
Column Cat. No. : 5020-07715
Eluent : A) CH₃CN
 : B) H₂O
 : A/B = 80/20
Flow rate : 0.4 mL/min
Col. Temp. : 40°C
Detection : RI (35°C, positive) (GL-7454 RI Detector)
Injection Vol. : 20 μ L
Sample : Taurine and Inositol

Analyte:

1. Taurine (500 mg/L)
 2. Inositol (500 mg/L)