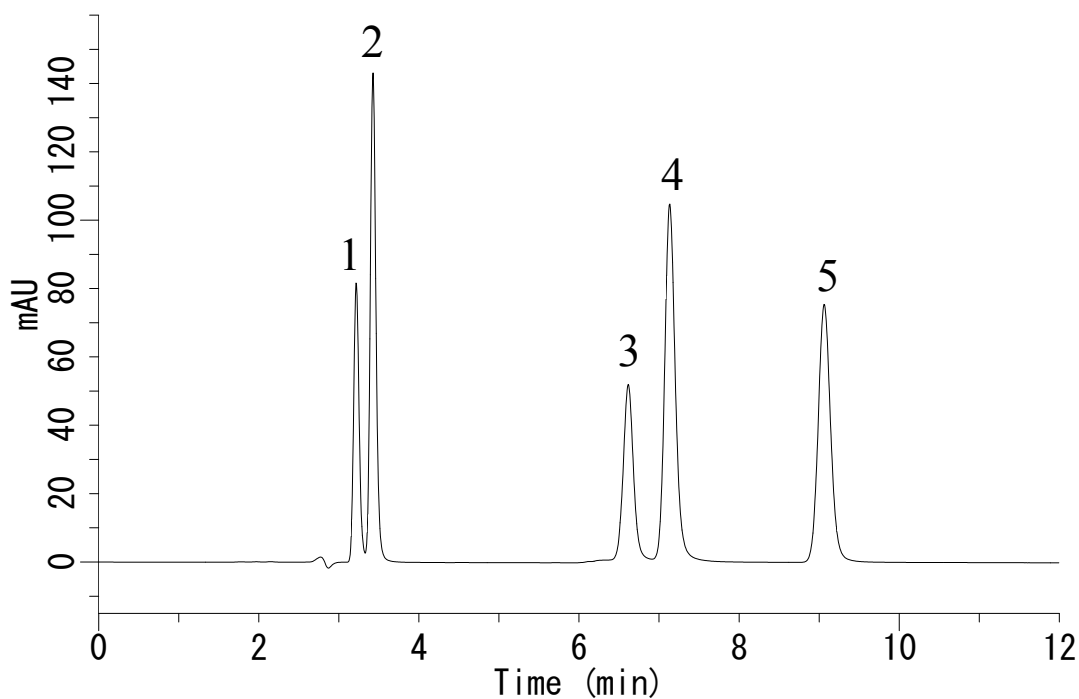


# InertSearch™ for LC

Inertsil® Applications

## Analysis of Nucleobases

Data No. LA886-0871



### Conditions

**System** : GL-7400 HPLC system  
**Column** : Inertsil HILIC (3 $\mu$ m, 250 x 3.0 mm I.D.)  
**Column Cat. No.** : 5020-07776  
**Eluent** : A) CH<sub>3</sub>CN  
          : B) 10 mM HCOONH<sub>4</sub>  
          : A/B = 90/10, v/v  
**Flow rate** : 0.6 mL/min  
**Col. Temp.** : 40°C  
**Detection** : UV 254 nm (GL-7452A PDA Detector)  
**Injection Vol.** : 10  $\mu$ L  
**Sample** : Nucleobases

### Analyte:

1. Thymine (10 mg/L)  
2. Uracil (10 mg/L)  
3. Cytosine (10 mg/L)  
4. Adenine (10 mg/L)  
5. Guanine (10 mg/L)