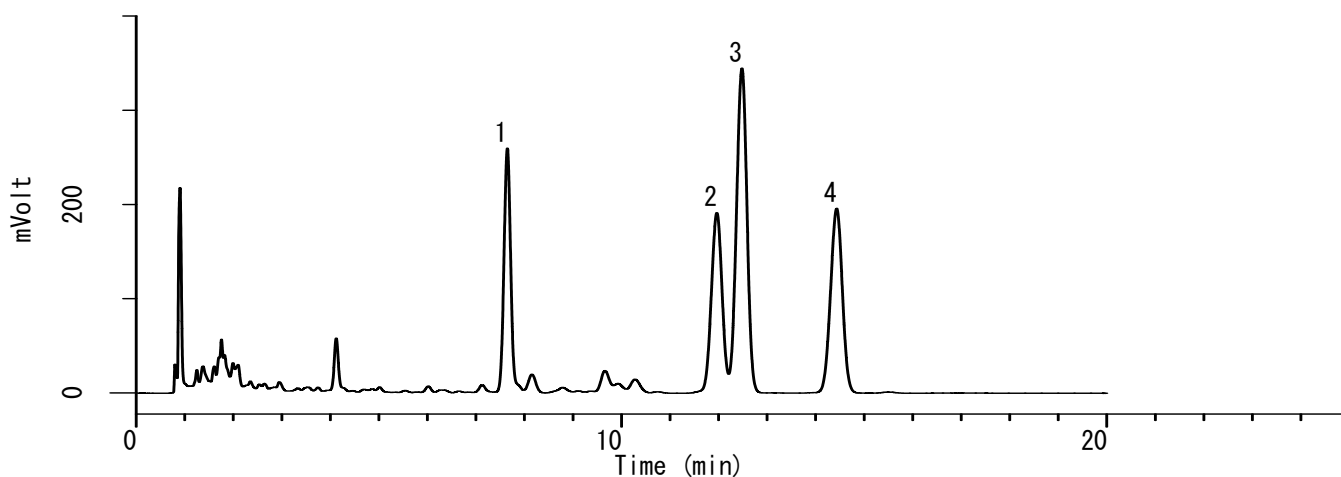


# InertSearch™ for LC

Inertsil® Applications

## Analysis of Phytosterol (InertSustain C18)

Data No. LA891-0142



### Conditions

**System** : LC800 HPLC system  
**Column** : InertSustain C18 HP (3 $\mu$ m, 150 x 2.1 mm I.D.)  
**Column Cat. No.** : 5020-14415  
**Eluent** : A) CH<sub>3</sub>CN  
          : B) H<sub>2</sub>O  
          : A/B = 95/5, v/v  
**Flow rate** : 0.4 mL/min  
**Col. Temp.** : 40 °C  
**Detection** : UV 205 nm (GL-7452A PDA Detector)  
**Injection Vol.** : 2  $\mu$ L  
**Sample** : Phytosterol

### Analyte:

1.	Ergosterol	(1 mg/mL)
2.	Campesterol	(1 mg/mL)
3.	Stigmasterol	(1 mg/mL)
4.	$\beta$ -Sitosterol	(1 mg/mL)

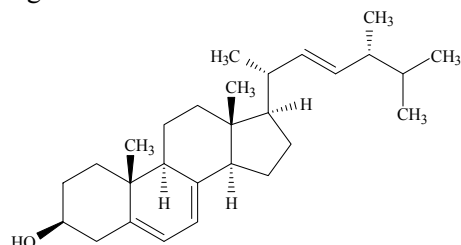
# InertSearch™ for LC

Inertsil® Applications

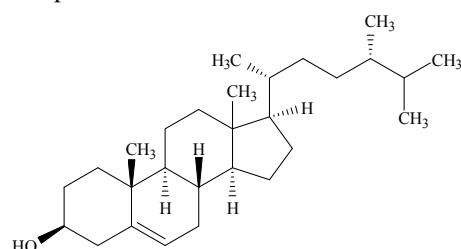
## Analysis of Phytosterol (InertSustain C18)

Data No. LA891-0142

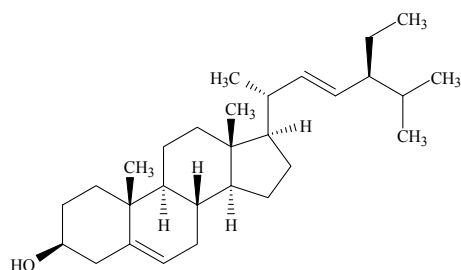
### 1. Ergosterol



### 2. Campesterol



### 3. Stigmasterol



### 4. β-Sitosterol

