

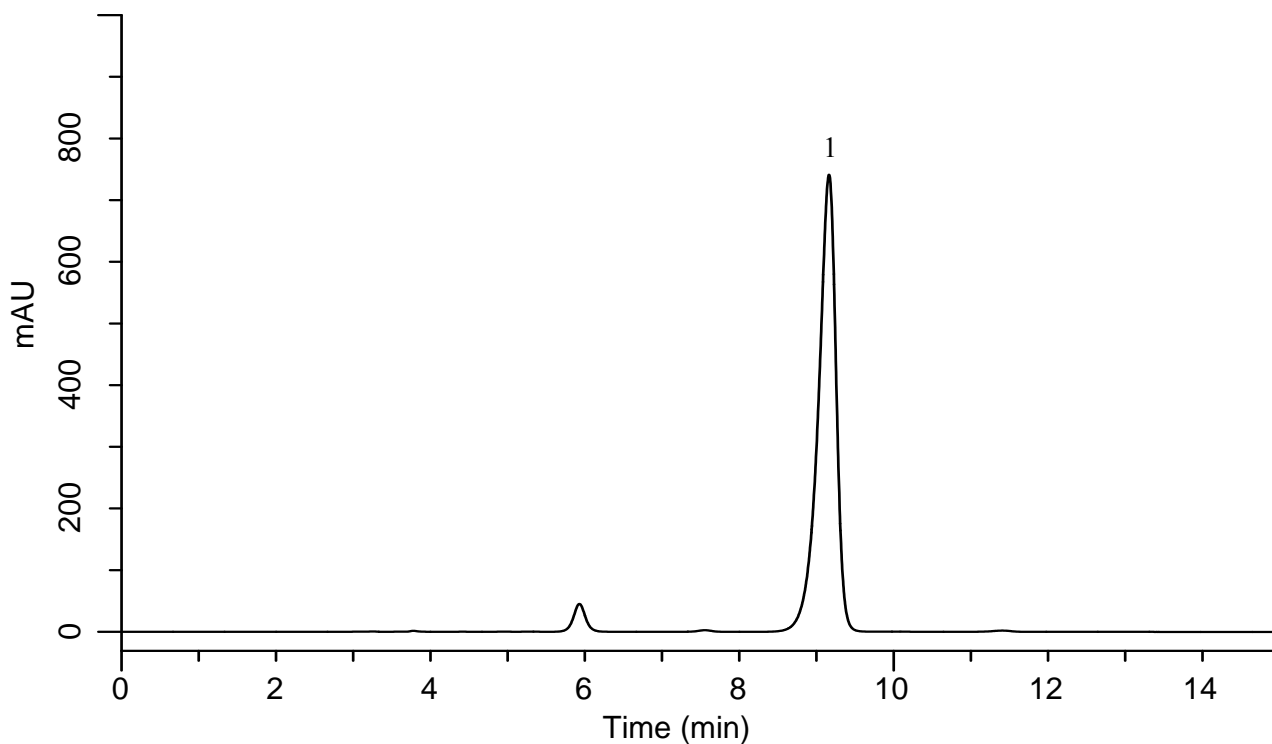
InertSearch™ for LC

Inertsil® Applications

Analysis of Lincomycin

(Under the Condition of Japanese Pharmacopoeia 16)

Data No. LA900-0811



Conditions

System	: GL-7400 HPLC system	Analyte :	
Column	: Inertsil C8-4 (5 μm, 250 x 4.0 mm I.D)	1. Lincomycin Hydrochloride	(1000 mg/L)
Column Cat. No.	: 5020-04076	Theoretical plates	: 8208 (> 4000)
Eluent	: A) CH ₃ CN B) CH ₃ OH C) H ₃ PO ₄ a.q.* (pH 6.0, 10 % NH ₃ a.q.)	Tailing factor	: 0.80 (< 1.5)
	A/B/C = 150/150/780 ,v/v/v	Relative standard deviation (N = 6)	: 1.4 % (< 2 %)
	* Add H ₂ O (1000 mL) to H ₃ PO ₄ (13.5 mL)		
Flow Rate	: 0.6 mL/min		
Col. Temp.	: 46 °C		
Detection	: UV 210 nm nm (GL-7450 UV Detector)		
Injection Vol.	: 20 μL		
Sample	: Lincomycin Hydrochloride		