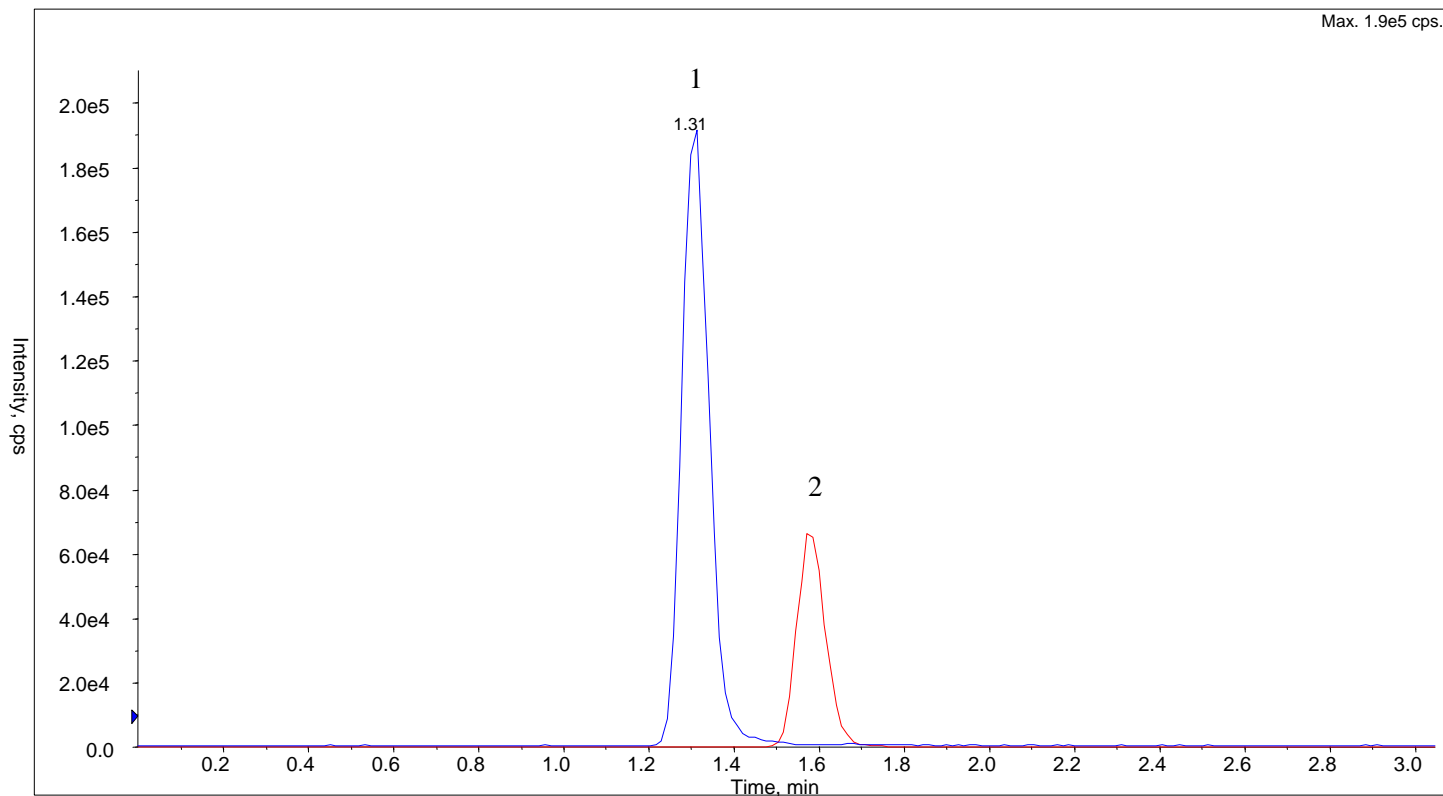


InertSearch™ for LC

Inertsil® Applications

Analysis of Basic drugs (InertSustain C18)

Data No. LA902-0811



Conditions

System : LC800 HPLC system
Column : InertSustain C18 (3 μ m, 75 x 2.1 mm I.D.)
Column Cat. No. : 5020-07413
Eluent : A) CH₃CN
B) 0.1 % HCOOH in H₂O
A/B = 10/90, v/v
(Mixed by a gradient mixer)
Flow Rate : 0.3 mL/min
Col. Temp. : 40 °C
Detection : LC/MS/MS (4000Q TRAP® : ESI, Positive, MRM)
CUR CAD IS TEM GS1 GS2
20 8 5500 700 60 30
Injection Vol. : 5 μ L
Sample : Basic drugs

Analyte:

1. Ranitidine (100 ng/mL) Q1: 315.2 Q3: 315.0
2. Sulpiride (100 ng/mL) Q1: 342.2 Q3: 112.2