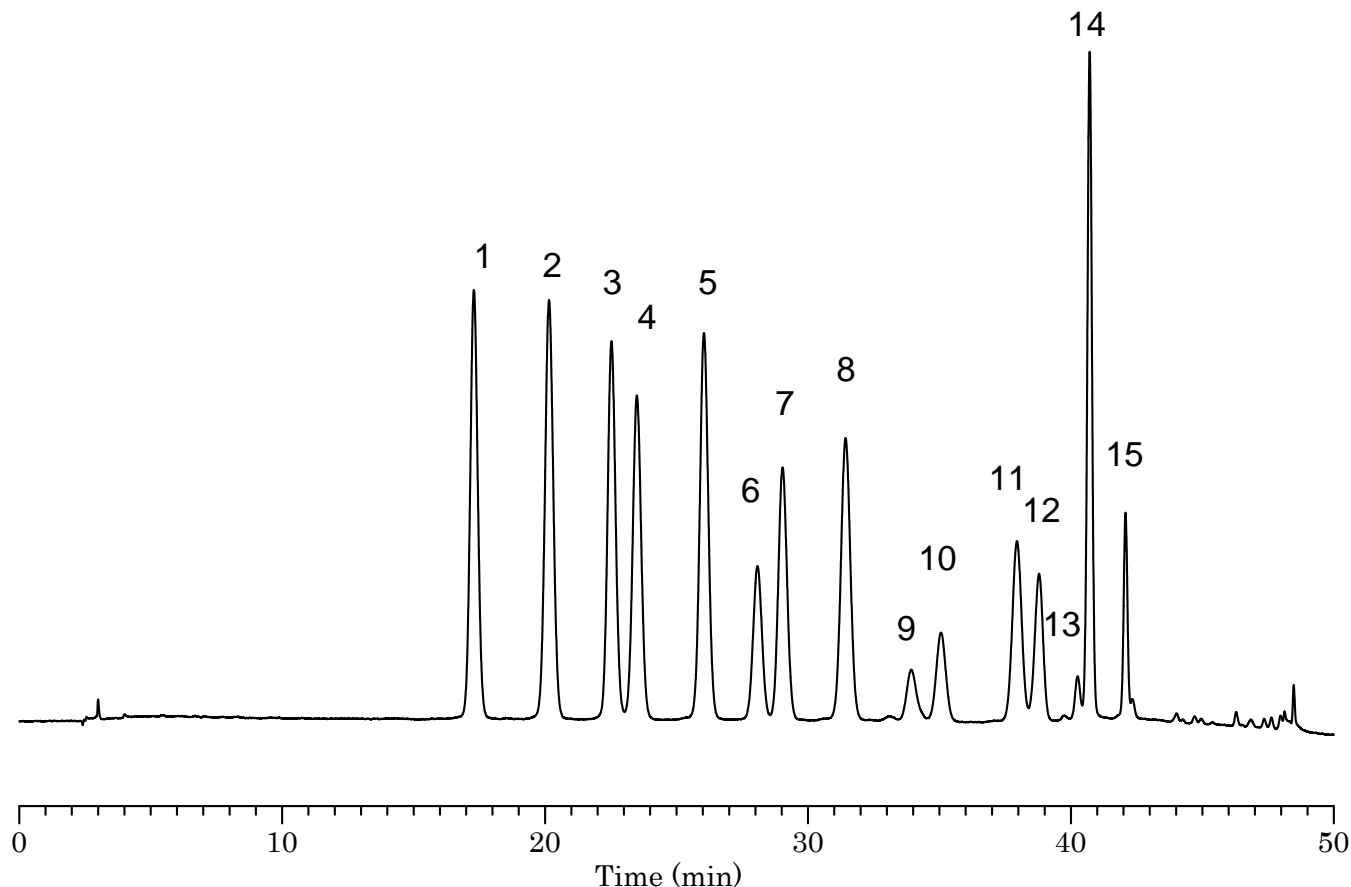


InertSearch™ for LC

Inertsil® Applications

Analysis of Bilberry extract (InertSustain C18)

Data No. LA904-0871



Conditions

System : LC800 HPLC system
Column : InertSustain C18 (5 μ m, 250 x 4.6 mm I.D.)
Column Cat. No. : 5020-07346
Eluent : A) H₂O/CH₃CN/CH₃OH/HCOOH = 40/22.5/22.5/10, v/v/v/v
B) H₂O/HCOOH = 90/10, v/v
A/B = 7/93 -35 min- 25/75 -10 min- 65/35
-1 min- 100/0 -4 min- 100/0, v/v
(Mixed by a gradient mixer)
Flow Rate : 1.0 mL/min
Col. Temp. : 30 °C
Detection : VIS 535 nm (LC800 UV Detector)
Injection Vol. : 10 μ L
Sample : Powdered bilberry extract (USP)

Analyte:

Bilberry powder (1.25 mg/mL)
1. Delphinidin-3-*O*-galactoside
2. Delphinidin-3-*O*-glucoside
3. Cyanidin-3-*O*-galactoside
4. Delphinidin-3-*O*-arabinoside
5. Cyanidin-3-*O*-glucoside
6. Petunidin-3-*O*-galactoside
7. Cyanidin-3-*O*-grabinoside
8. Petunidin-3-*O*-glucoside
9. Peonidin-3-*O*-galactoside
10. Petunidin-3-*O*-arabinoside
11. Peonidin-3-*O*-glucoside
12. Malvidin-3-*O*-galactoside
13. Peonidin-3-*O*-arabinoside
14. Malvidin-3-*O*-glucoside
15. Malvidin-3-*O*-arabinoside