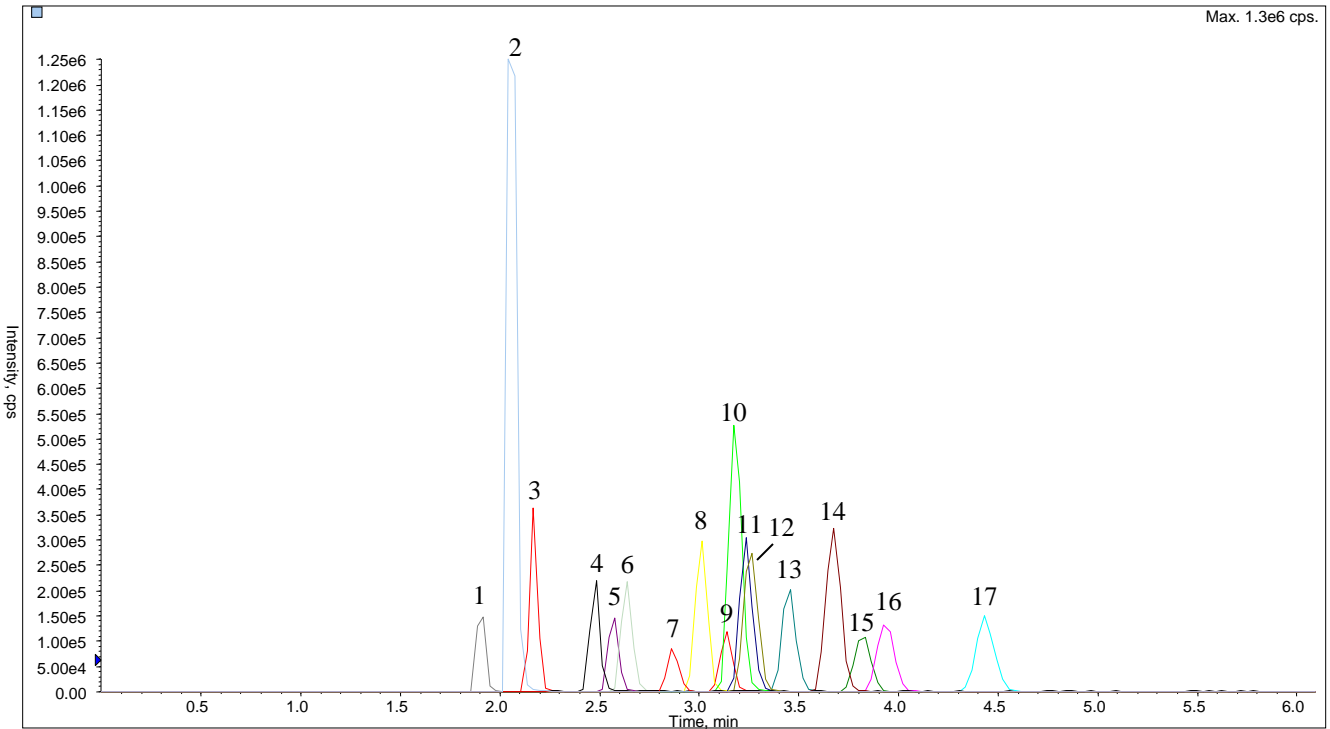


Analysis of 17 Anti-depressant drugs (InertSustain C18)



Max. 1.3e6 cps.

Conditions

System : LC800 HPLC system
 4000 Q TRAP®

Column : InertSustain C18 HP (3µm, 150 x 2.1 mm I.D.)

Column Cat. No. : 5020-14415

Eluent : A) 0.1 % HCOOH in CH₃CN
 B) 0.1 % HCOOH in H₂O
 A/B = 2/98 -0.5 min- 40/60 -5.5 min-
 40/60 ,v/v

Flow rate : 0.4 mL/min

Col. Temp. : 40 °C

Detection : LC/MS/MS (4000Q TRAP® : ESI, Positive, MRM)

CUR	CAD	IS	TEM	GS1	GS2
10	4	4500	700	70	10

Injection Vol. : 5 µL

Sample : Anti-depressant drugs

Analyte:

	R.T.	Q1	Q3	DP	EP	CE	CXP	
1.	Sulpiride	1.90	342.2	112.2	71	10	37	4
2.	Milnacipran	2.07	247.2	230.2	41	10	17	14
3.	Trazodone	2.17	372.2	176.1	81	10	35	8
4.	Mianserin	2.48	265.1	208.2	61	10	29	12
5.	Amoxapine	2.57	314.2	271.1	81	10	35	16
6.	Doxepin	2.64	280.2	107.0	51	10	35	18
7.	Paroxetine	2.87	330.2	192.2	76	10	31	10
8.	Desipramine	3.01	267.2	71.9	46	10	27	10
9.	Fluvoxamine	3.14	319.2	70.9	51	10	33	10
10.	Imipramine	3.18	281.2	86.1	51	10	25	14
11.	Nortriptyline	3.24	264.1	233.2	61	10	21	12
12.	Maprotiline	3.26	278.2	250.2	71	10	27	14
13.	Amitriptyline	3.45	278.2	233.2	76	10	27	14
14.	Trimipramine	3.67	295.4	100.3	51	10	25	4
15.	Fluoxetine	3.82	310.2	44.0	36	10	39	4
16.	Sertraline	3.94	306.1	275.0	36	10	19	16
17.	Clomipramine	4.43	315.2	86.1	56	10	27	14

(each 100 ng/mL)