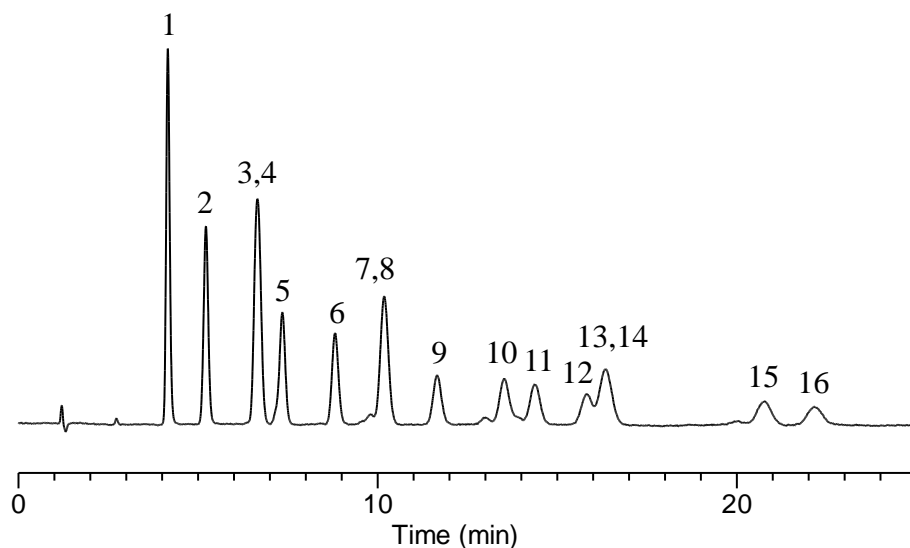


## Analysis of 16 kinds of Aldehydes (Detected by Pre-Column Method with DNPH)



### Conditions

**System** : GL-7400 HPLC system  
**Column** : InertSustain C18 (5 $\mu$ m, 150 x 4.6 mm I.D.)  
**Column Cat. No.** : 5020-07345  
**Eluent** : A) CH<sub>3</sub>CN  
           B) H<sub>2</sub>O  
           A / B = 60 / 40  
**Flow rate** : 1.0 mL/min  
**Col. Temp.** : 40 °C  
**Detection** : PDA 360 nm  
**Injection Vol.** : 10  $\mu$ L

### Analyte:

1. DNPH-Formaldehyde	200 $\mu$ g/L
2. DNPH-Acetaldehyde	200 $\mu$ g/L
3. DNPH-Acetone	200 $\mu$ g/L
4. DNPH-Acrolein	200 $\mu$ g/L
5. DNPH-Propionaldehyde	200 $\mu$ g/L
6. DNPH-Crotonaldehyde	200 $\mu$ g/L
7. DNPH-Isobutyraldehyde	200 $\mu$ g/L
8. DNPH- <i>n</i> -Butyraldehyde	200 $\mu$ g/L
9. DNPH-Benzaldehyde	200 $\mu$ g/L
10. DNPH-Isovaleraldehyde	200 $\mu$ g/L
11. DNPH- <i>n</i> -Valeraldehyde	200 $\mu$ g/L
12. DNPH- <i>o</i> -Tolualdehyde	200 $\mu$ g/L
13. DNPH- <i>m</i> -Tolualdehyde	200 $\mu$ g/L
14. DNPH- <i>p</i> -Tolualdehyde	200 $\mu$ g/L
15. DNPH-Hexanal	200 $\mu$ g/L
16. DNPH-2,5-dimethylbenzaldehyde	200 $\mu$ g/L