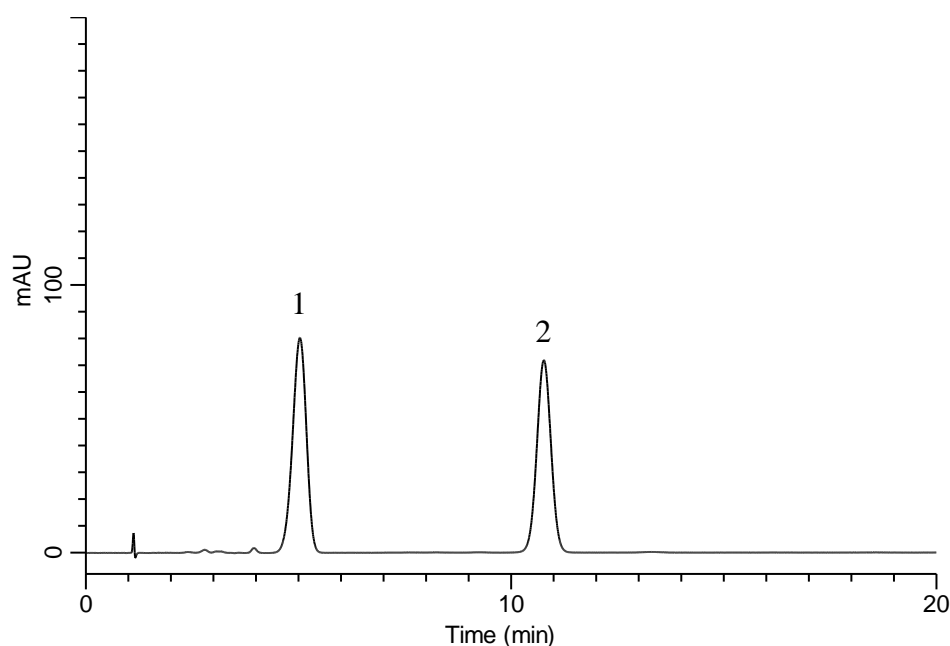


## Analysis of Levofolinate calcium



### Conditions

**System** : GL-7400 HPLC system  
**Column** : InertSustain C18 (5 $\mu$ m, 150 x 4.6 mm I.D.)  
**Column Cat. No.** : 5020-07345  
**Eluent** : A) 10 mM Na<sub>2</sub>HPO<sub>4</sub> (pH 7.5, H<sub>3</sub>PO<sub>4</sub>),  
 10 mM Tetra-n-butylammonium Bromide  
 B) CH<sub>3</sub>OH  
 A/B = 70/30, v/v  
**Flow rate** : 1.5 mL/min  
**Col. Temp.** : 40 °C  
**Detection** : UV 280 nm (GL-7452A PDA Detector)  
**Injection Vol.** : 10  $\mu$ L  
**Sample** : Levofolinate calcium

### Analyte:

1. Levofolinate calcium 100 mg/L  
 2. Folic acid 80 mg/L