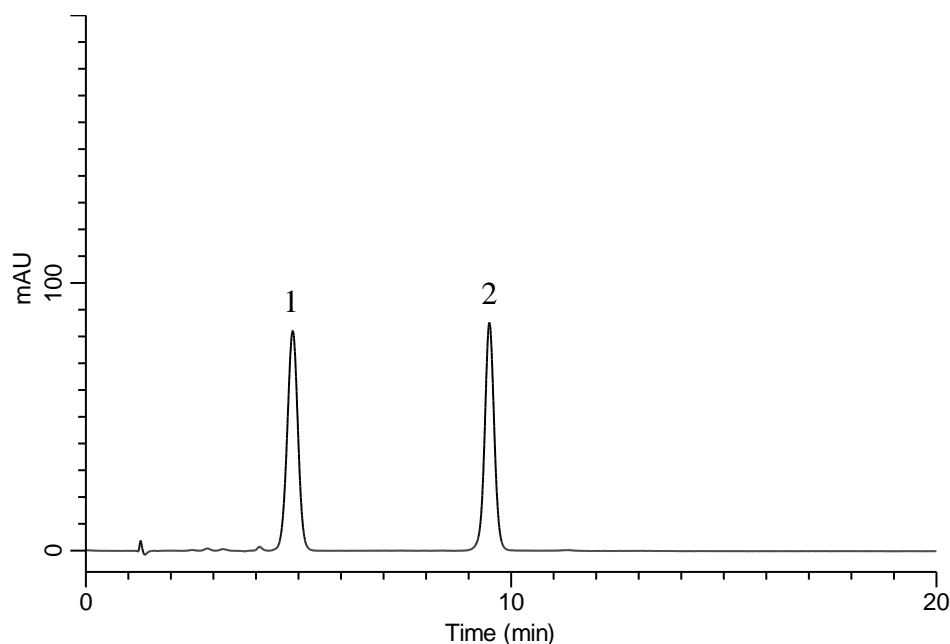


Analysis of Levofolinate calcium



Conditions

System : GL-7400 HPLC system
Column : InertSustain C18 HP (3 μ m, 150 x 3.0 mm I.D.)
Column Cat. No. : 5020-14425
Eluent : A) 10 mM Na₂HPO₄ (pH 7.5, H₃PO₄),
 10 mM Tetra-n-butylammonium Bromide
 B) CH₃OH
 A/B = 70/30, v/v
Flow rate : 0.6 mL/min
Col. Temp. : 40 °C
Detection : UV 280 nm (GL-7452A PDA Detector)
Injection Vol. : 4 μ L
Sample : Levofolinate calcium

Analyte:

1. Levofolinate calcium 100 mg/L
 2. Folic acid 80 mg/L