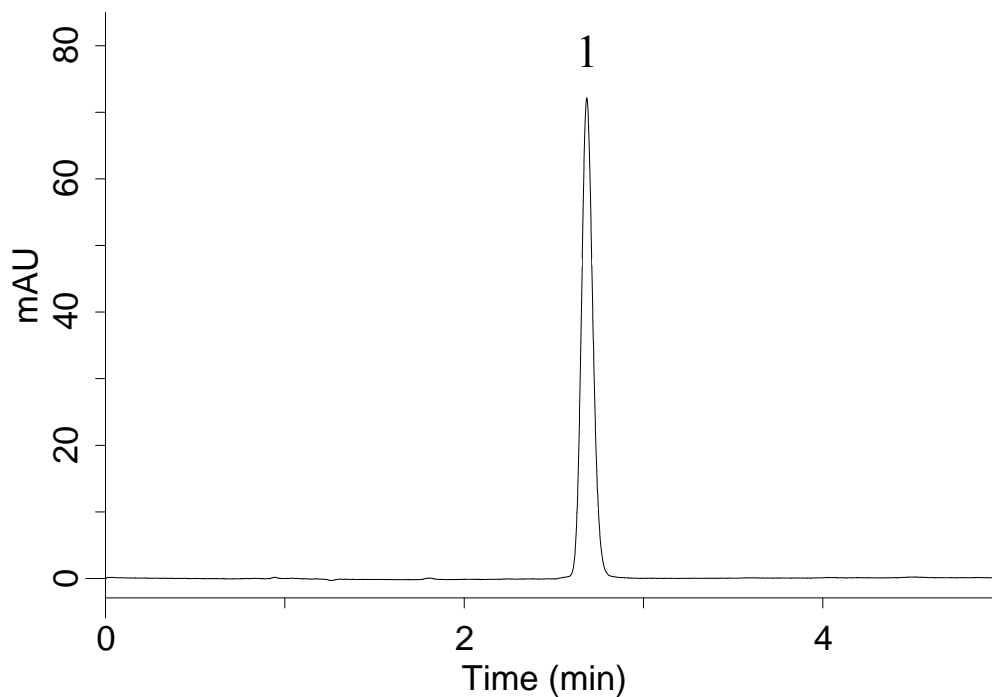


# InertSearch™ for LC

Inertsil® Applications

## Analysis of Atorvastatin

Data No. LA921-0701



### Conditions

**Column** : Inertsil C8-4 HP (3 $\mu$ m, 100 x 4.6 mm I.D.)  
**Column Cat. No.** : 5020-14057  
**Eluent** : A) CH<sub>3</sub>CN  
          : B) 50 mM CH<sub>3</sub>COONH<sub>4</sub> (pH 5.0, CH<sub>3</sub>COOH)  
          : A/B = 50/50, v/v

**Flow rate** : 1 mL/min  
**Col. Temp.** : 25°C  
**Detection** : UV 240 nm  
**Injection Vol.** : 5  $\mu$ L  
**Sample** : Standard

### Analyte:

1. Atorvastatin (40 mg/L)