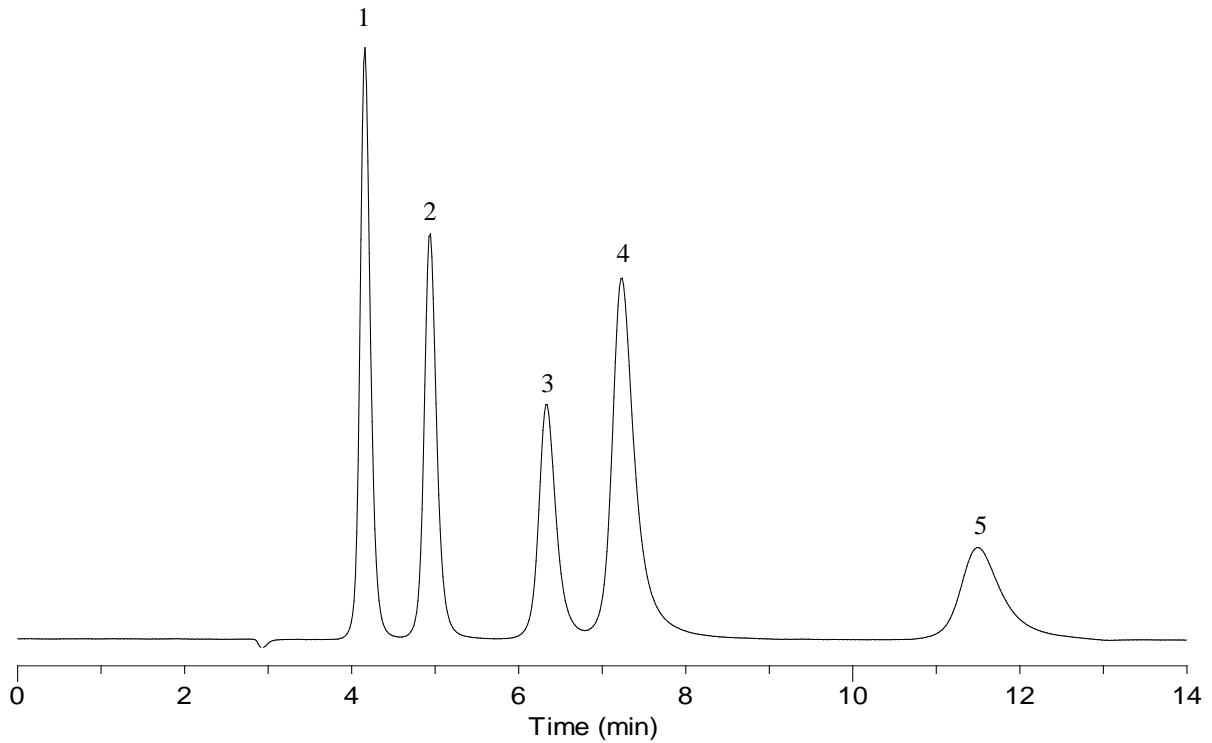


## Analysis of Sugar Alcohols



### Conditions

**System** : LC700 system  
**Column** : InertSphere Sugar-1 (5 $\mu$ m, 150 x 4.6 mm I.D.)  
**Column Cat. No.:** 5020-11001  
**Eluent** : 100 mM NaOH  
**Flow rate** : 0.5 mL/min  
**Col. Temp.** : 25°C  
**Detection** : ECD Pulse Mode (ED723, Gold)  
     E1: 150 mV      t1: 600 ms  
     E2: -1500 mV    t2: 50 ms  
     E3: 600 mV      t3: 50 ms  
     E4: -200 mV     t4: 100 ms  
                     ts: 50 ms

### Analyte:

1. Inositol	(10 mg/L)
2. Erythritol	(10 mg/L)
3. Arabitol	(10 mg/L)
4. Galactitol	(10 mg/L)
5. Lactitol	(10 mg/L)

**Injection Vol.** : 10  $\mu$ L  
**Sample** : Sugar alcohols