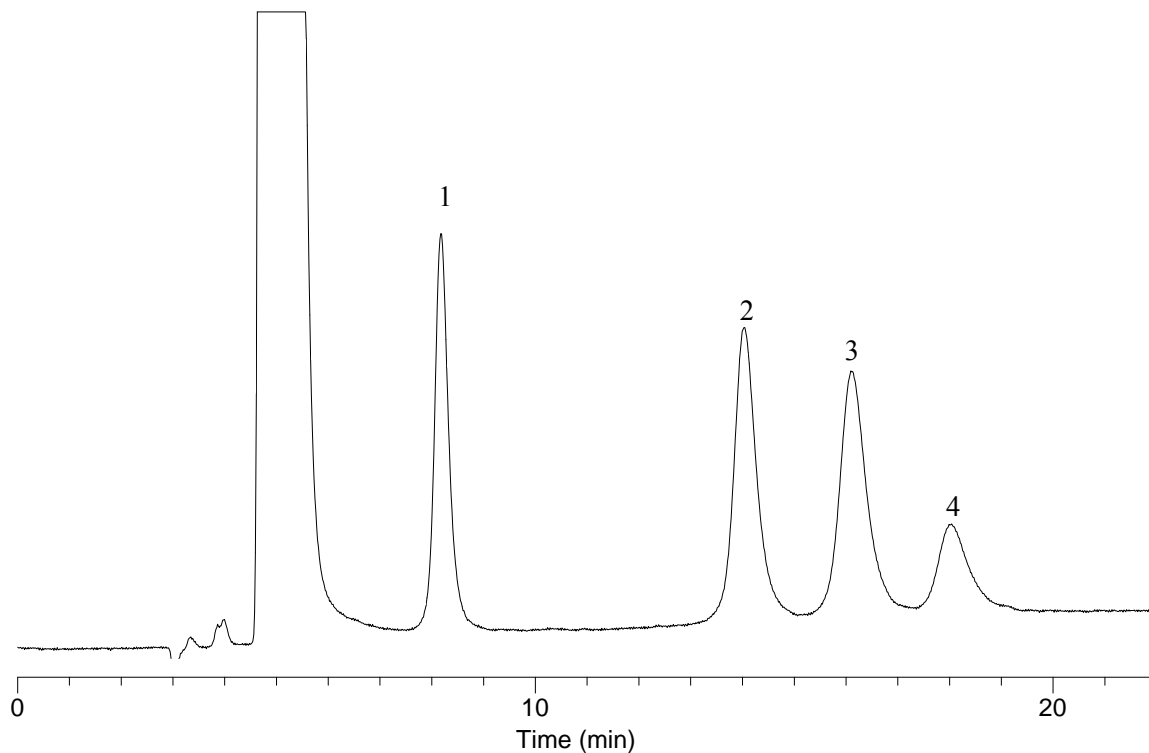


InertSearch™ for LC

Inertsil® Applications

Analysis of Sugar Phosphates

Data No. LA927-0812



Conditions

System : LC700 system
Column : InertSphere Sugar-1 (5µm, 150 x 4.6 mm I.D.)
Column Cat. No. : 5020-11001
Eluent : A) 100 mM NaOH
Flow rate : B) 100 mM NaOH, 500 mM CH₃COONa
Col. Temp. : A/B = 45/55 – 30 min – 20/80, v/v
Detection : 0.5 mL/min
: 25°C
: ECD Pulse Mode (ED723, Gold)
E1: 150 mV t1: 600 ms
E2: -1500 mV t2: 50 ms
E3: 600 mV t3: 50 ms
E4: -200 mV t4: 100 ms
ts: 50 ms

Analyte:

1. Glucose-1-phosphate (10 mg/L)
2. Glucose-6-phosphate (10 mg/L)
3. Fructose-1-phosphate (10 mg/L)
4. Fructose-6-phosphate (10 mg/L)

Injection Vol. : 10 µL
Sample : Sugar phosphates