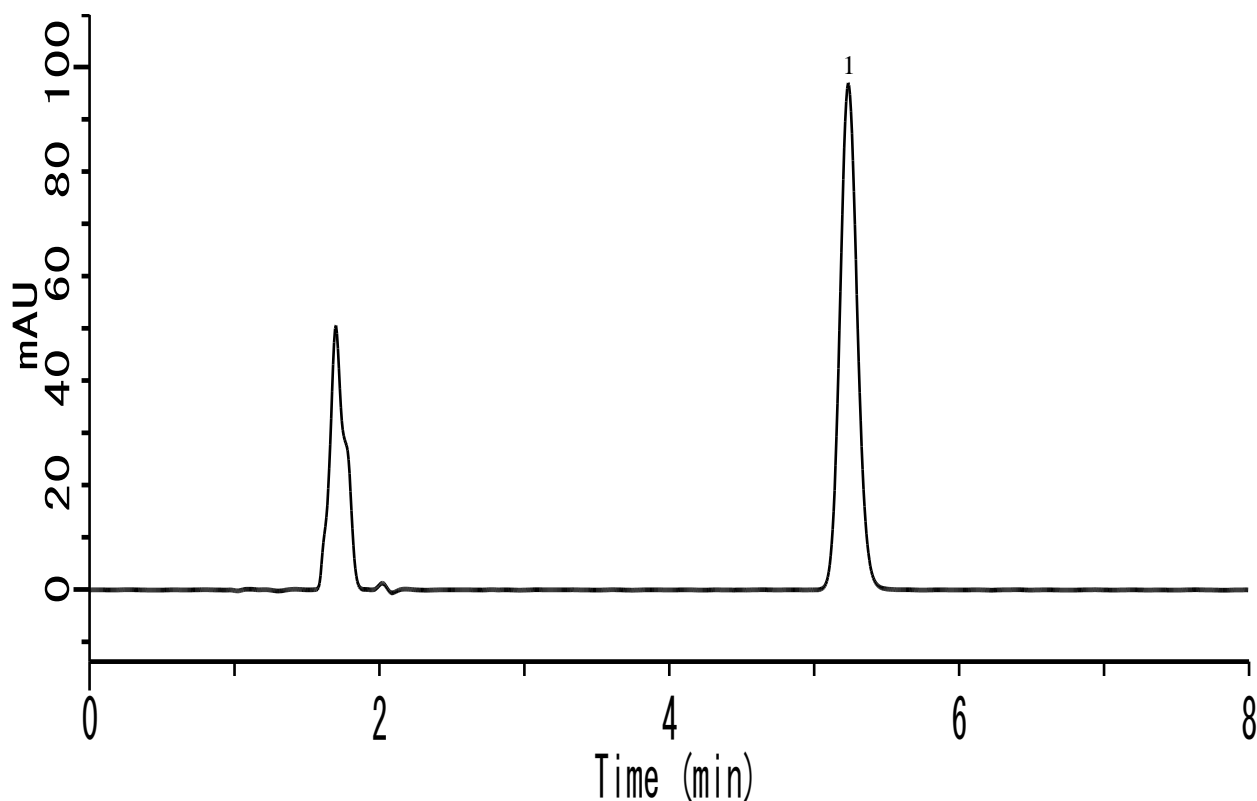


Analysis of Acetylsalicylic acid (InertSustain C18)



Conditions

System : LC800 HPLC system
Column : InertSustain C18 (5 μ m, 150 x 4.6 mm I.D.)
Column Cat. No. : 5020-07345
Eluent : A) CH₃CN
 B) THF
 C) CH₃COOH
 D) H₂O
 A/B = 20/5/5/70, v/v
Flow rate : 1.0 mL/min
Col. Temp. : 40 °C
Detection : UV 276 nm (LC800 UV Detector)
Injection Vol. : 20 μ L
Sample : Standard

Analyte:

1. Acetylsalicylic acid (100 μ g/mL)