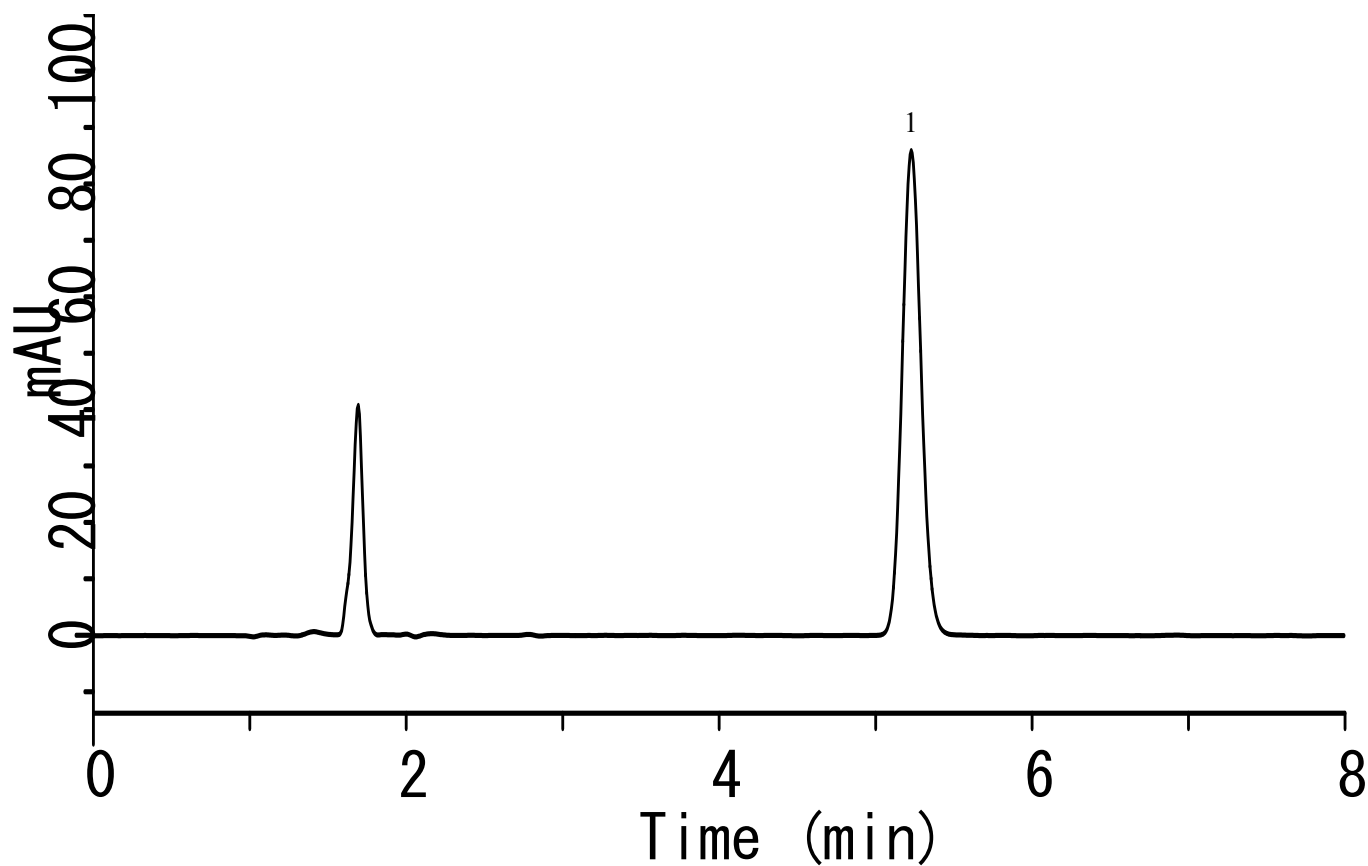


# InertSearch™ for LC

Inertsil® Applications

## Analysis of Cold medicine (InertSustain C18)

Data No. LA930-0142



### Conditions

**System** : LC800 HPLC system  
**Column** : InertSustain C18 (5  $\mu$ m, 150 x 4.6 mm I.D.)  
**Column Cat. No.** : 5020-07345  
**Eluent** : A) CH<sub>3</sub>CN  
          : B) THF  
          : C) CH<sub>3</sub>COOH  
          : D) H<sub>2</sub>O  
          : A/B = 20/5/5/70, v/v  
**Flow rate** : 1.0 mL/min  
**Col. Temp.** : 40 °C  
**Detection** : UV 276 nm (LC800 UV Detector)  
**Injection Vol.** : 20  $\mu$ L  
**Sample** : Tablet

### Analyte:

1. Acetylsalicylic acid