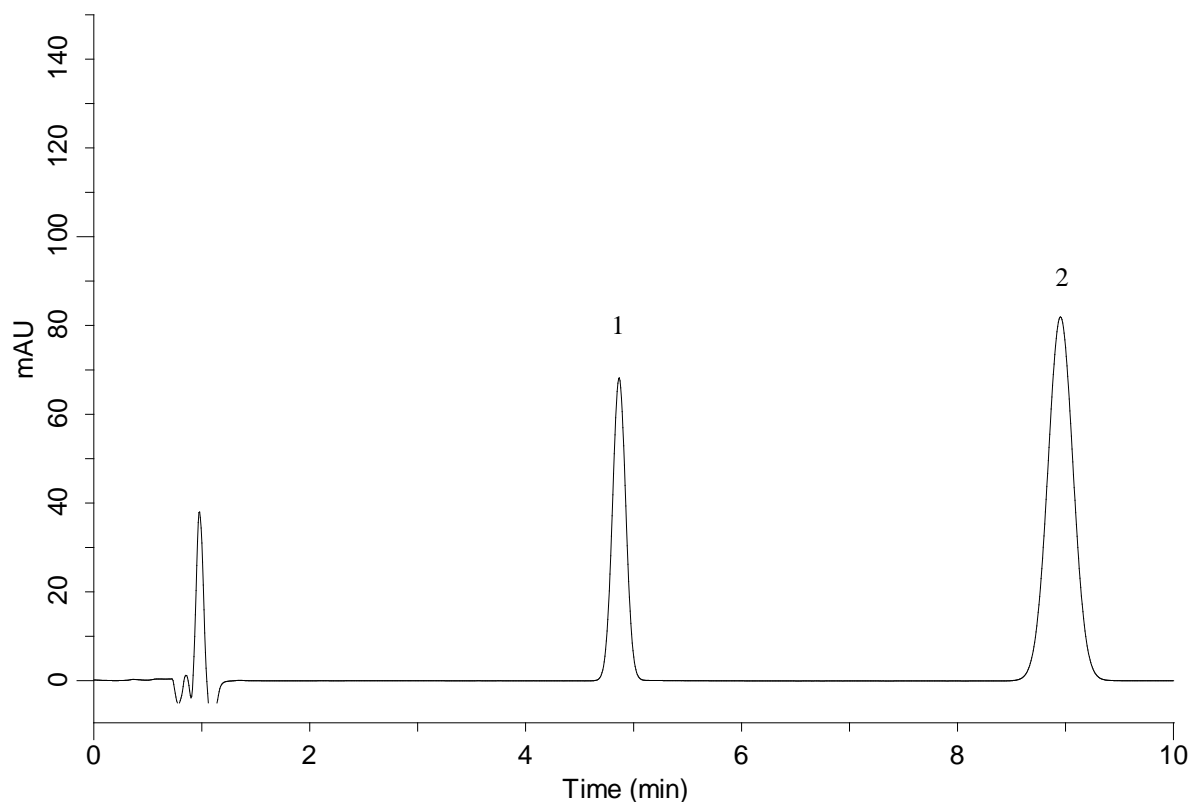


## Analysis of Terbinafine Chloride (Under the Condition of Japanese Pharmacopoeia)



### Conditions

**System** : GL-7400 HPLC system  
**Column** : Inertsil WP300 C18  
 (5  $\mu$  m, 125 x 4.0 mm I.D.)  
**Column Cat. No.** : 5020-87037  
**Eluent** : A) CH<sub>3</sub>CN  
 B) THF  
 C) Solition\*  
 A/B = 2/1/2, v/v/v  
**Flow rate** : 1.3 mL/min  
**Col. Temp.** : 25 °C  
**Detection** : UV 282 nm (GL-7452A PDA Detector)  
**Injection Vol.** : 10  $\mu$  L  
**Sample** : Standard

### Analyte:

1. <i>p</i> -Terphenyl	200 mg/L
2. Terbinafine Chloride	17.5 mg/L

\*Dissolve 9 mL of Tetramethylammonium hydroxide (10 % in H<sub>2</sub>O) in 2000 mL of water.  
 Adjust to pH 8.0 with phosphoric acid (1 in 25).