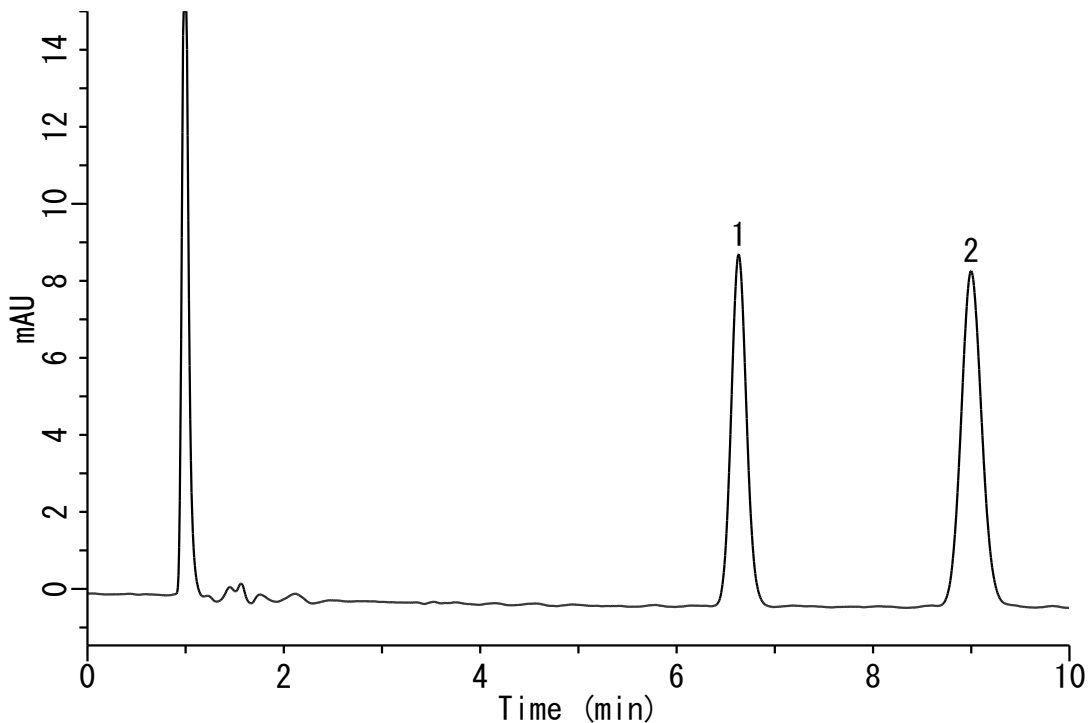


Analysis of Histamine and Thiamine (InertSustain C18)



Conditions

System : GL-7400 HPLC system
Column : InertSustain C18 (5 μ m, 150 x 3.0 mm I.D)
Column Cat. No. : 5020-07325
Eluent : A) CH₃CN
 B) 20 mM NaH₂PO₄, 10 mM IPCC-08 (pH 2.2, H₃PO₄)
 (IPCC-08: Sodium 1-Octanesulfonate)
 A/B = 20/80, v/v
Flow Rate : 0.6 mL/min
Col. Temp. : 40 °C
Detection : UV 220 nm (GL-7452A PDA Detector)
Injection Vol. : 2 μ L
Sampe : Standard

Analyte:

1. Histamine (20 μ g/mL)
 2. Thiamine (20 μ g/mL)