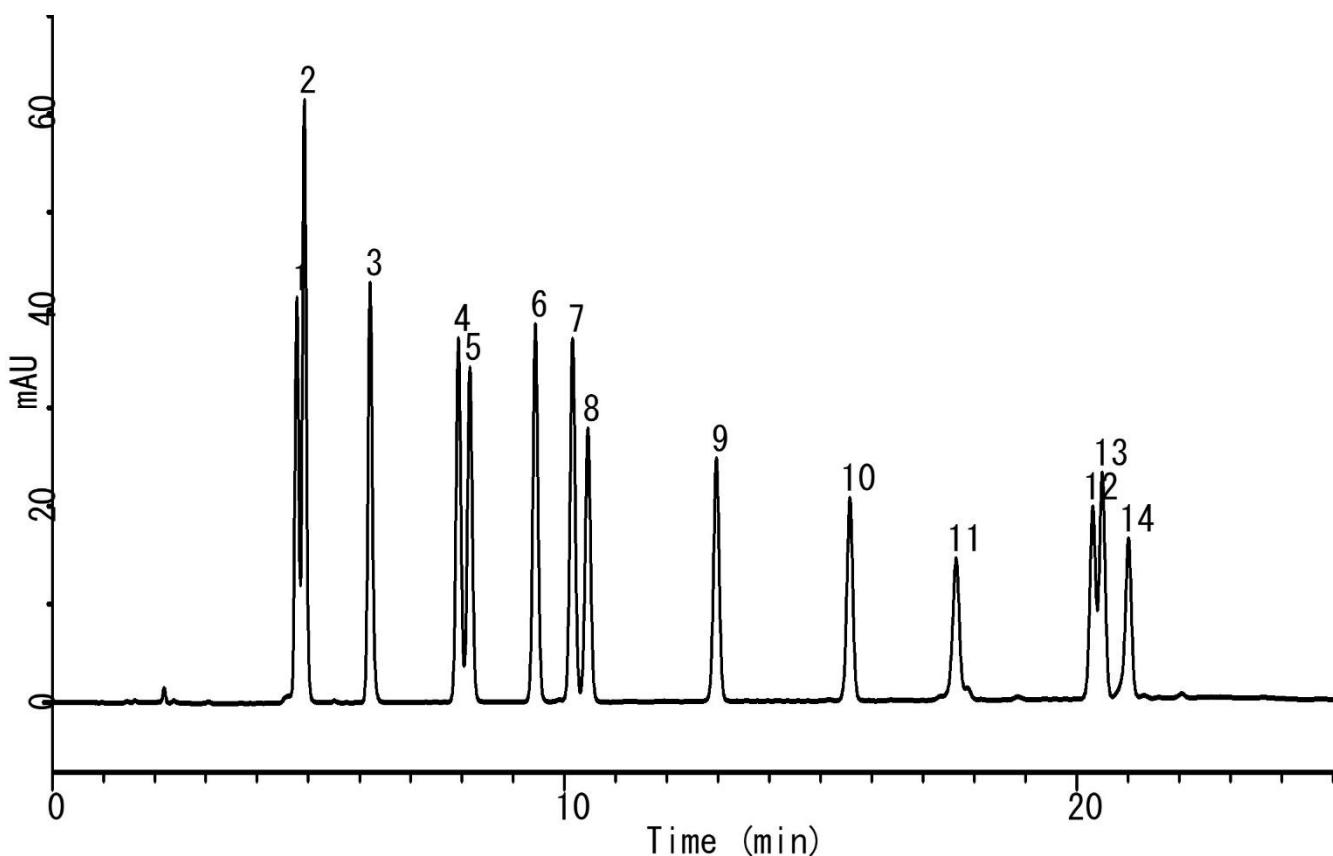


Analysis of Analysis of 14 kinds of Phthalates



Conditions

System : GL-7400 HPLC system
Column : Inertsil C8-4 (5 μ m, 250 x 4.6 mm I.D.)
Column Cat. No. : 5020-04086
Eluent : A) CH₃CN
 B) H₂O
 A/B = 60/40 – 20 min – 90/10 – 5 min
 – 90/10, v/v
Flow Rate : 1.0 mL/min
Col. Temp. : 40 °C
Detection : UV 230 nm (GL-7450 UV Detector)
Injection Vol. : 10 μ L
Sample : Standard

Analyte:

1. Bis(2-methoxyethyl)phthalate(DMEP) (10 μ g/mL)
 2. Dimethyl phthalate(DMP) (10 μ g/mL)
 3. Diethyl Phthalate(DEP) (10 μ g/mL)
 4. Diisopropyl Phthalate(DIPP) (10 μ g/mL)
 5. Dipropyl Phthalate(DPrP) (10 μ g/mL)
 6. Diphenyl Phthalate(DPhP) (10 μ g/mL)
 7. Benzyl butyl Phthalate(BBP) (10 μ g/mL)
 8. Diisobutyl Phthalate(DIBP) (10 μ g/mL)
 9. Dipentyl Phthalate(DPeP) (10 μ g/mL)
 10. Dihexyl Phthalate(DHxP) (10 μ g/mL)
 11. Diheptyl Phthalate(DHpP) (10 μ g/mL)
 12. Bis(2-ethylhexyl) Phthalate(DEHP) (10 μ g/mL)
 13. Dioctyl Phthalate(DOP) (10 μ g/mL)
 14. Dinonyl Phthalate(DNP) (10 μ g/mL)