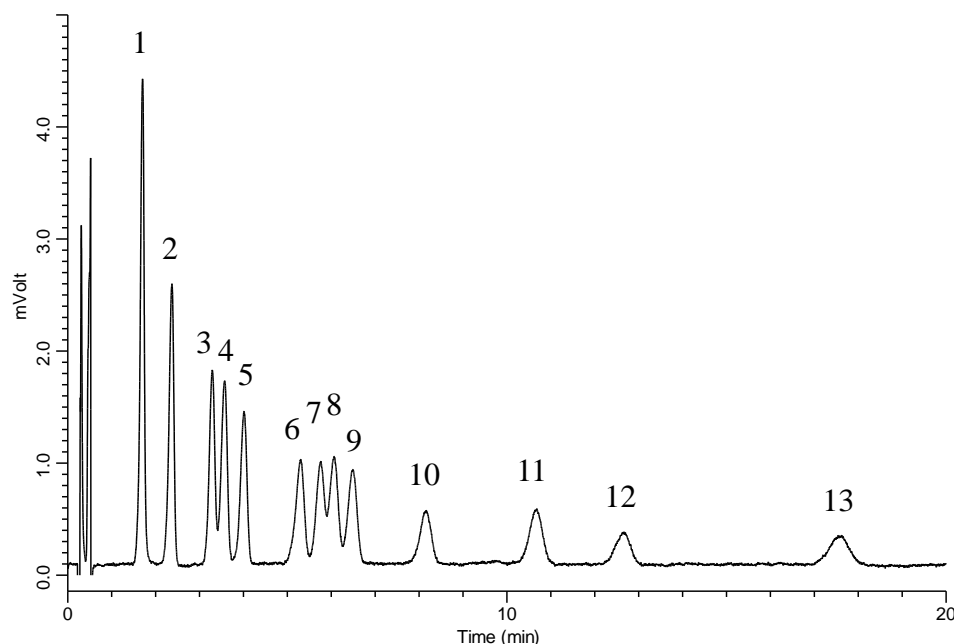


Analysis of 13 kinds of Aldehydes (Detected by Pre-Column Method with DNPH)



Conditions

System : LC800 HPLC system
Column : InertSustain C18 (3 μ m, 75 x 3.0 mm I.D.)
Column Cat. No. : 5020-07423
Eluent : A) CH₃CN
 B) H₂O
 C) THF
 A/B/C = 35/55/10, v/v/v
Flow rate : 1.0 mL/min
Col. Temp. : 40 °C
Detection : UV 360 nm (LC800 UV Detector)
Injection Vol. : 10 μ L
Sample : DNPH-Aldehyde

Analyte:

1. DNPH-Formaldehyde	150 μ g/L
2. DNPH-Acetaldehyde	150 μ g/L
3. DNPH-Acetone	150 μ g/L
4. DNPH-Acrolein	150 μ g/L
5. DNPH-Propionaldehyde	150 μ g/L
6. DNPH-Crotonaldehyde	150 μ g/L
7. DNPH-Methylethylketone	150 μ g/L
8. DNPH-Methacrolein	150 μ g/L
9. DNPH- <i>n</i> -Butyraldehyde	150 μ g/L
10. DNPH-Benzaldehyde	150 μ g/L
11. DNPH- <i>n</i> -Valeraldehyde	150 μ g/L
12. DNPH- <i>m</i> -Tolualdehyde	150 μ g/L
13. DNPH-Hexanal	150 μ g/L