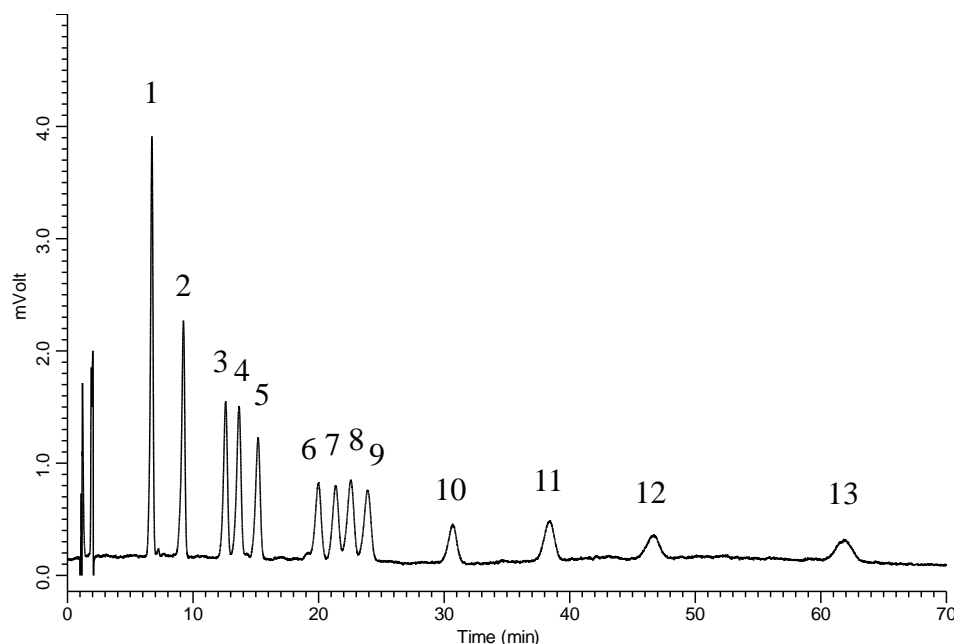


## Analysis of 13 kinds of Aldehydes (Detected by Pre-Column Method with DNPH)



### Conditions

**System** : LC800 HPLC system  
**Column** : InertSustain C18 HP (3 $\mu$ m, 150 x 3.0 mm I.D.)  
**Column Cat. No.** : 5020-14425  
**Eluent** : A) CH<sub>3</sub>CN  
           B) H<sub>2</sub>O  
           C) THF  
           A/B/C = 35/55/10, v/v/v  
**Flow rate** : 0.5 mL/min  
**Col. Temp.** : 40 °C  
**Detection** : UV 360 nm (LC800 UV Detector)  
**Injection Vol.** : 10  $\mu$ L

### Analyte:

1. DNPH-Formaldehyde	150 $\mu$ g/L
2. DNPH-Acetaldehyde	150 $\mu$ g/L
3. DNPH-Acetone	150 $\mu$ g/L
4. DNPH-Acrolein	150 $\mu$ g/L
5. DNPH-Propionaldehyde	150 $\mu$ g/L
6. DNPH-Crotonaldehyde	150 $\mu$ g/L
7. DNPH-Methylethylketone	150 $\mu$ g/L
8. DNPH-Methacrolein	150 $\mu$ g/L
9. DNPH- <i>n</i> -Butyraldehyde	150 $\mu$ g/L
10. DNPH-Benzaldehyde	150 $\mu$ g/L
11. DNPH- <i>n</i> -Valeraldehyde	150 $\mu$ g/L
12. DNPH- <i>m</i> -Tolualdehyde	150 $\mu$ g/L
13. DNPH-Hexanal	150 $\mu$ g/L