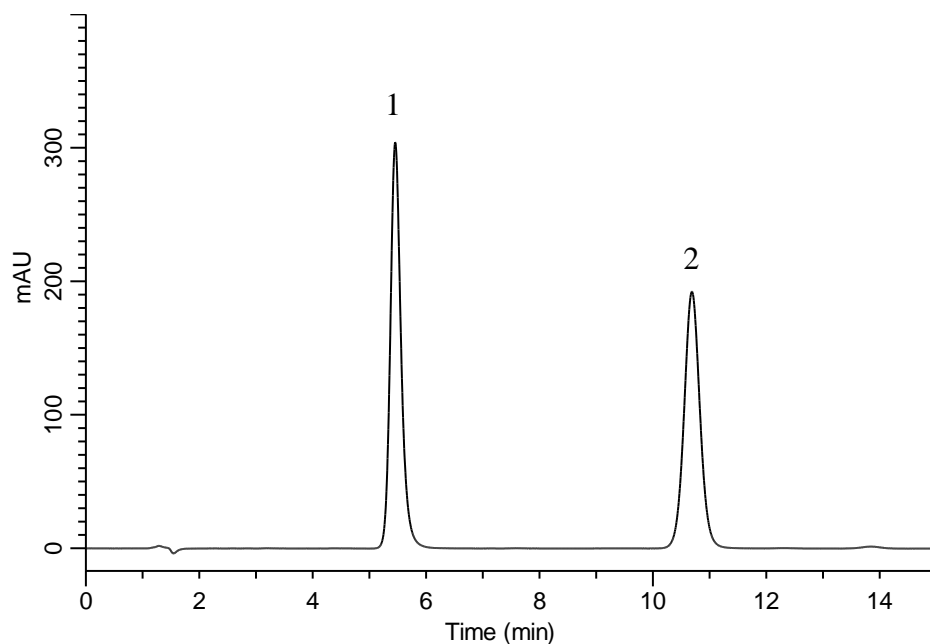


## Analysis of Valsartan (InertSustain C18)



### Conditions

**System** : GL-7400 HPLC system  
**Column** : InertSustain C18 (5 $\mu$ m, 125 x 3.0 mm I.D.)  
**Column Cat. No.** : 5020-07327  
**Eluent** : A) CH<sub>3</sub>CN  
           B) H<sub>2</sub>O  
           C) CH<sub>3</sub>COOH  
           A/B/C = 500/500/1, v/v/v (Premix)  
**Flow rate** : 0.4 mL/min  
**Col. Temp.** : 25 °C  
**Detection** : UV 225 nm (GL-7452A PDA Detecor)  
**Injection Vol.** : 10  $\mu$ L

### Analyte:

1. Valsartan 50 mg/L  
 2. Diclofenac sodium 60 mg/L

|                          | Valsartan |
|--------------------------|-----------|
| Tailing factor           | 1.23      |
| Theoretical plate number | 4325      |
| Resolution (1, 2)        | 12.6      |