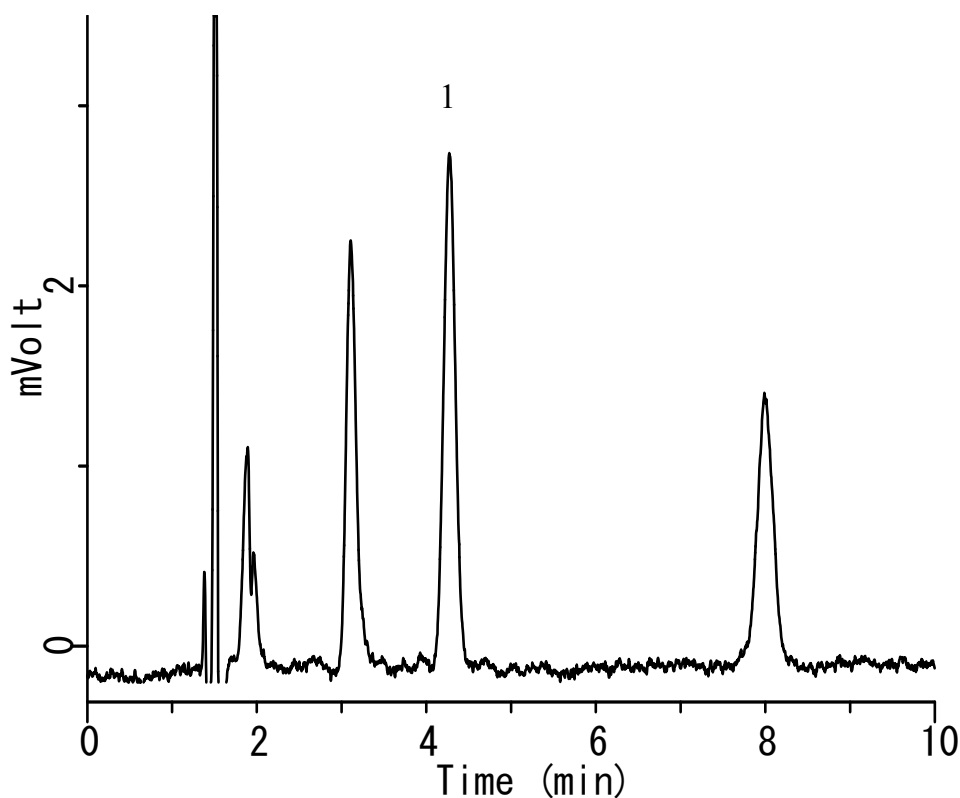


InertSearch™ for LC

Inertsil® Applications

Analysis of Non-ionic surfactant (Detected by Pre-Column complexation with Co-PAR)

Data No. LA974-0142



Conditions

System	: LC800 HPLC system	Analyte:	1. Heptaoxyethylene dodecyl ether [Deriv.]
Column	: InertSustain C18 (5 μ m, 150 x 4.6 mm I.D.)		0.002 mg/L
Column Cat. No.	: 5020-07345		
Eluent	: A) CH ₃ OH B) 10 mM Na ₂ B ₄ O ₇ A/B = 38/62 ,v/v		
Flow rate	: 1.0 mL/min		
Col. Temp.	: 40 °C		
Detection	: UV 510 nm (LC800 UV Detector)		
Injection Vol.	: 20 μ L		
Sample	: Heptaoxyethylene dodecyl ether (cobalt-4-(2-pyridylazo) resorcinol complex)		