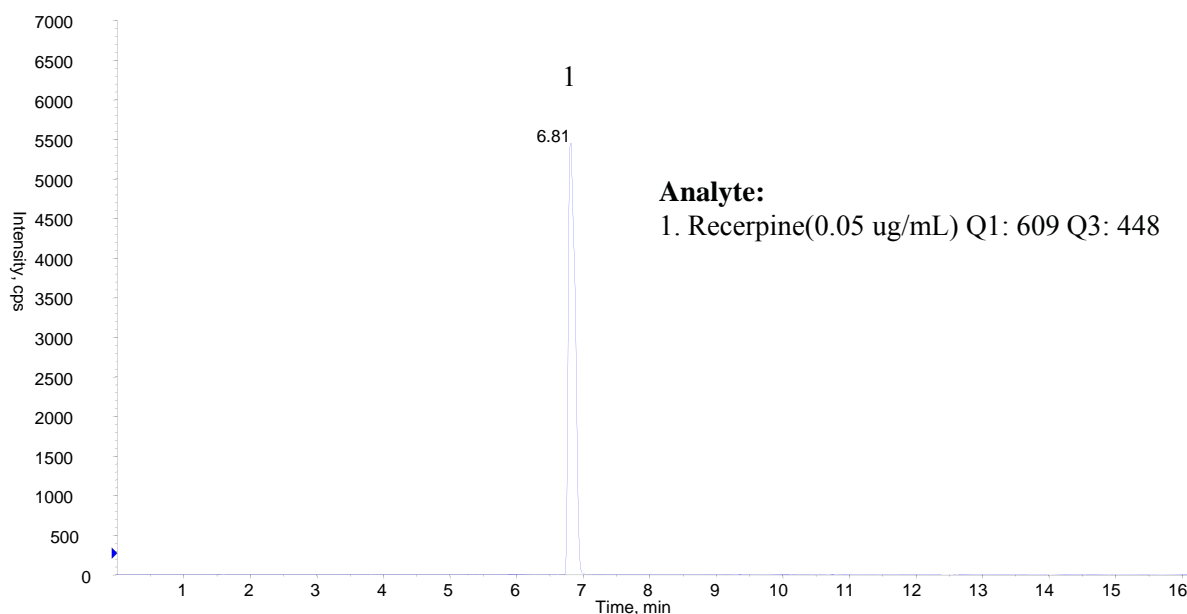


InertSearch™ for LC

Inertsil® Applications

Analysis of Recerpine (InertSustain C18)

Data No. LA977-0811



Conditions

System : LC800 HPLC system
4000 Q TRAP®

Column : InertSustain C18 HP (3µm, 50 x 2.1 mm I.D.)

Column Cat. No. : 5020-14412

Eluent : A) 0.02 % TFA in CH₃CN
: B) 0.02 % TFA in H₂O
A/B = 25/75 -3 min- 25/75 -2 min- 90/10 -7 min- 90/10, v/v

Flow rate : 0.2 mL/min

Col. Temp. : 40 °C

Detection : LC/MS/MS (4000Q TRAP® : ESI, Positive, MRM)
CUR CAD IS TEM GS1 GS2
20 6 4500 600 70 80

Injection Vol. : 10 µL

Sample : Standard