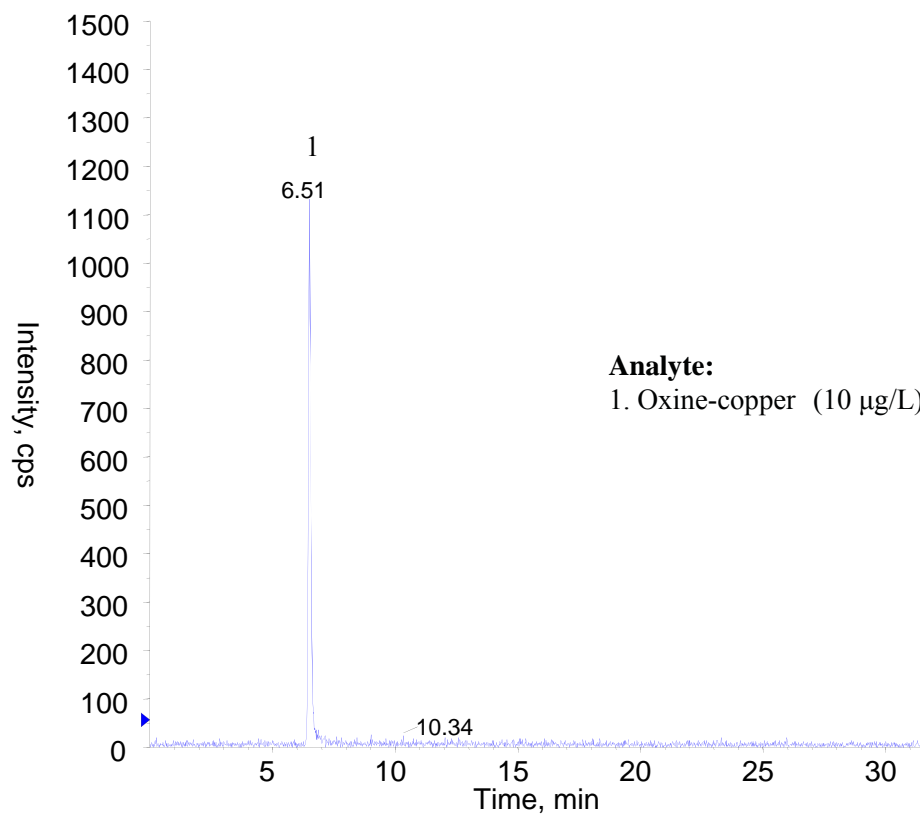


# InertSearch™ for LC

Inertsil® Applications

## Analysis of Oxine-copper

Data No. LA980-0811



**Analyte:**

1. Oxine-copper (10 µg/L) Q1: 145.7 Q3: 74.8

### Conditions

**System** : LC800 HPLC system  
4000 Q TRAP®

**Column** : InertSustain C18 (3µm, 150 x 2.1 mm I.D.)

**Column Cat. No.** : 5020-07415

**Eluent** : A) CH<sub>3</sub>CN  
: B) 0.1 % HCOOH in H<sub>2</sub>O  
A/B = 5/95 -38 min- 100/0, v/v

**Flow rate** : 0.2 mL/min

**Col. Temp.** : 40 °C

**Detection** : LC/MS/MS (4000Q TRAP® : ESI, Positive, MRM)  
CUR CAD IS TEM GS1 GS2  
30 6 5000 700 80 80

**Injection Vol.** : 5 µL

**Sample** : Standard