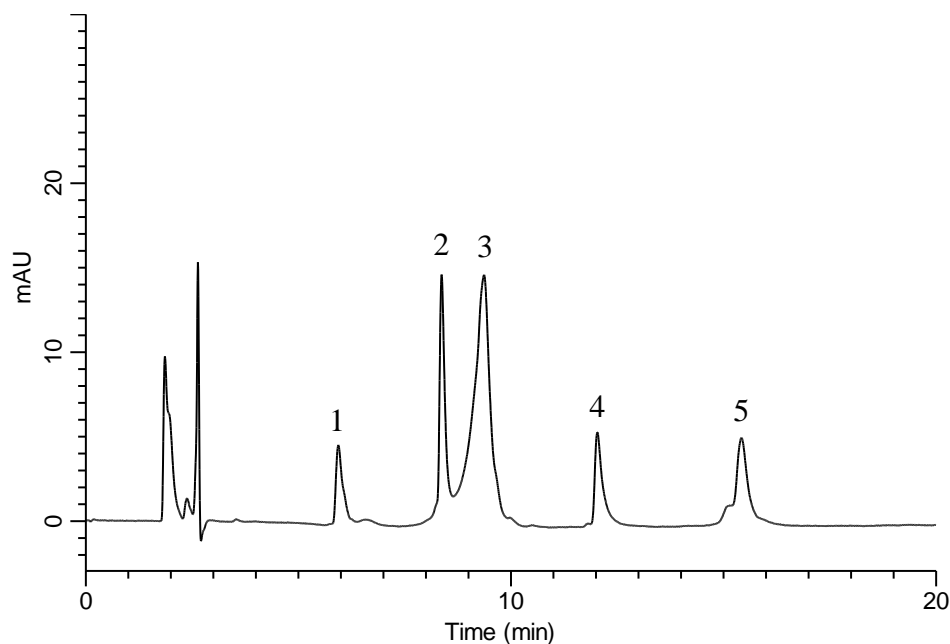


## Analysis of Proteins (MonoClad C18-HS)



### Conditions

**System** : GL-7400 HPLC system  
**Column** : MonoClad C18-HS (150 x 3 mm I.D.)  
**Column Cat. No.** : 5020-10803  
**Eluent** : A) 0.1 % HCOOH in CH<sub>3</sub>CN  
           : B) 0.1 % HCOOH in H<sub>2</sub>O  
           : A/B = 20/80 – 20 min – 70/30, v/v  
**Flow rate** : 0.4 mL/min  
**Col. Temp.** : 40 °C  
**Detection** : UV 280 nm (GL-7452A PDA detector)  
**Injection Vol.** : 10 µL  
**Sample** : Proteins

### Analyte:

1. Ribonuclease B
2. Cytochrome c
3. Lysozyme
4. BSA
5. Ovalbumin