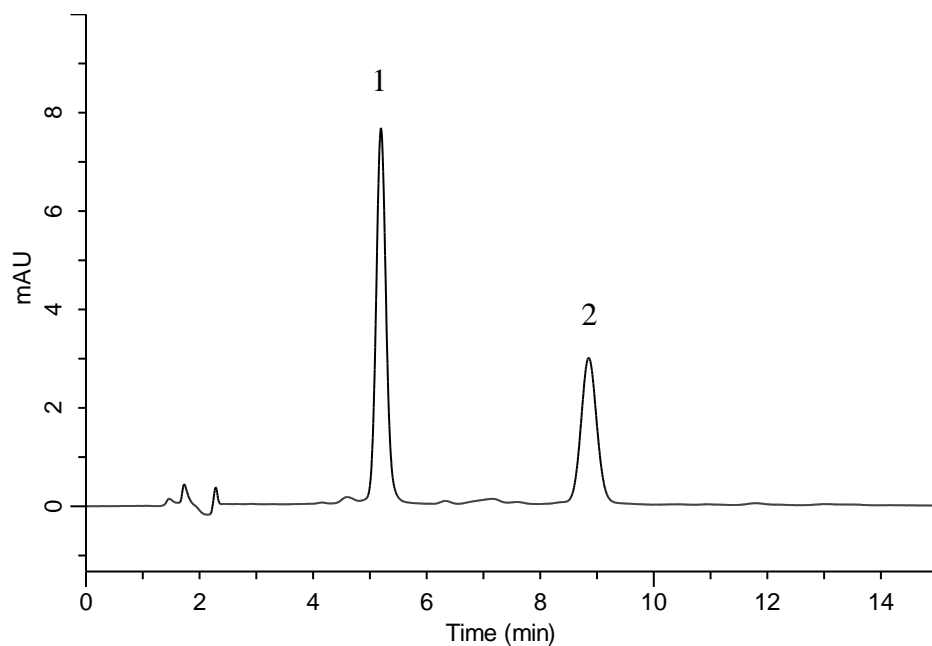


Analysis of Spiramycins



Conditions

Column : InertSustain C18 (5 μ m, 150 x 4.6 mm I.D.)
Column Cat. No. : 5020-07345
Eluent : A) CH₃CN
 : B) 65 mM NaH₂PO₄ (pH 2.5, H₃PO₄)
 : A/B = 25/75, v/v
Flow rate : 0.5 mL/min
Col. Temp. : 40 °C
Detection : UV 235 nm
Injection Vol. : 10 μ L
Sample : Standard

Analyte:

1. Neospiramycin I	2.0 mg/L
2. Spiramycin I	2.0 mg/L