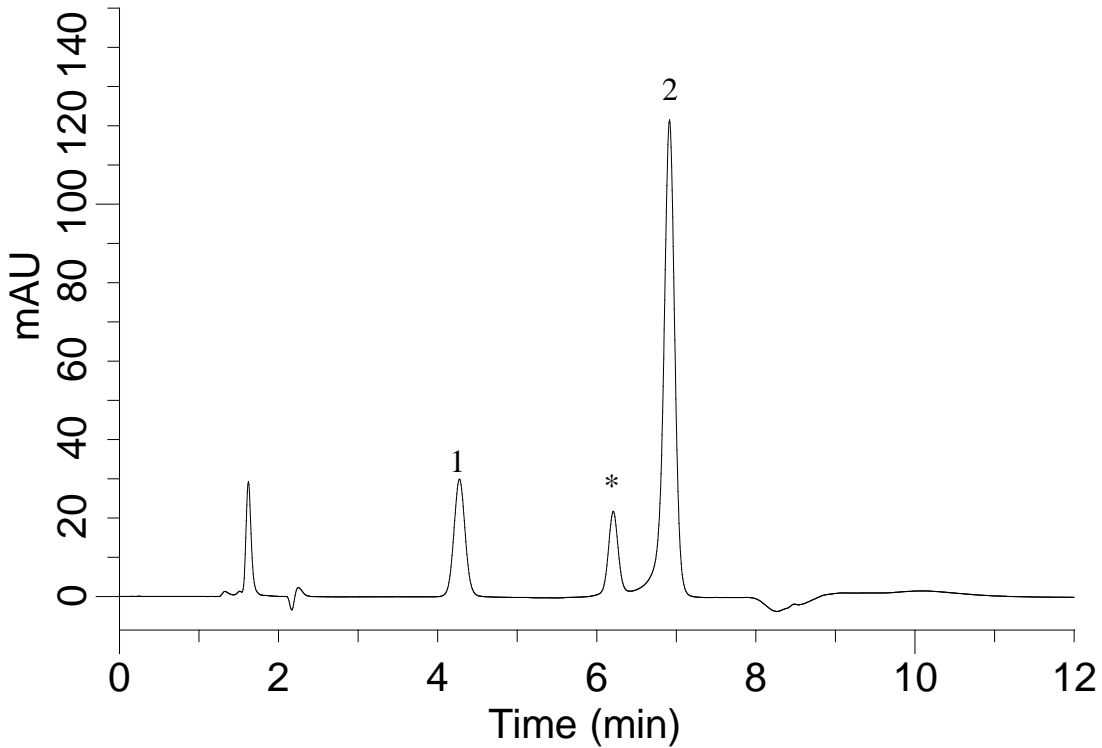


Analysis of Iohexol and Iopamidol



Conditions

System : GL-7400 HPLC system
Gurd column : Cartridge guard column E InertSustain C18 (5 µm, 10 x 4.0 mm I.D.)
Column Cat. No. : 5020-19099
Column : InertSustain C18 HP (3 µm, 150 x 3.0 mm I.D.)
Column Cat. No. : 5020-14425
Eluent : A) CH₃CN
 B) H₂O

Analyte :

1. Iopamidol (100 mg/L)
 2. Iohexol (500 mg/L)
 * Iohexol Isomer

| Time(min) | A(%) | B(%) |
|-----------|------|------|
| 0 | 3 | 97 |
| 2 | 5 | 95 |
| 4 | 5 | 95 |
| 4.1 | 14 | 86 |
| 5 | 14 | 86 |
| 5.1 | 3 | 97 |
| 12 | 3 | 97 |

Flow Rate : 0.6 mL/min
Col. Temp. : 40 °C
Detection : UV 254 nm (GL-7452A PDA Detector)
Injection Vol. : 1 µL
Sample : Standard