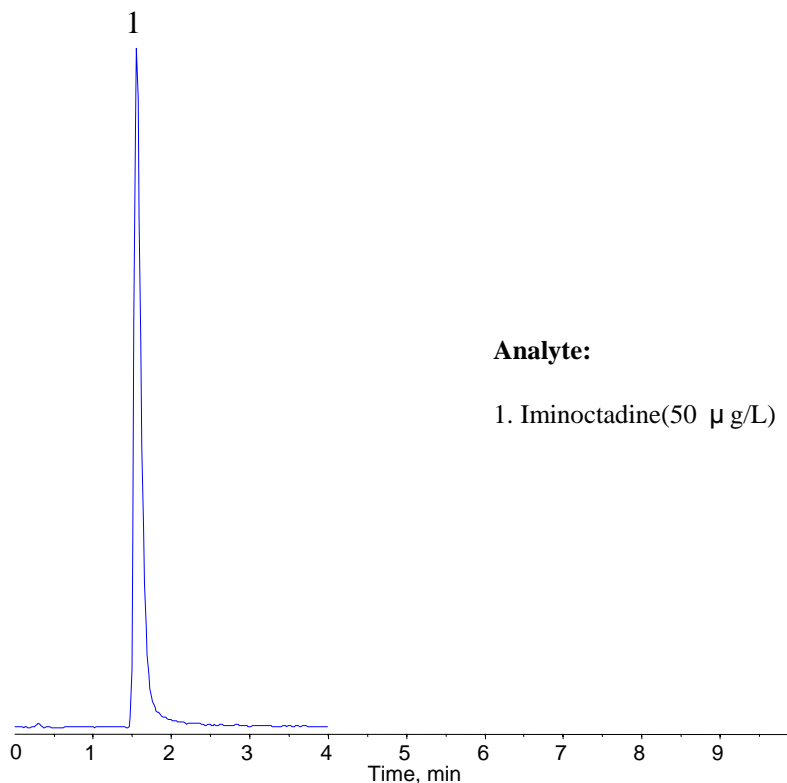


# InertSearch™ for LC

Inertsil® Applications

## Analysis of Iminoctadine

Data No. LB016-0848



Analyte:

|                           | Q1/Q3      | DP | CE |
|---------------------------|------------|----|----|
| 1. Iminoctadine(50 µ g/L) | 178.9/69.0 | 55 | 30 |

### Conditions

**System** : LC800 HPLC system  
4000 Q TRAP®

**Column** : InertSustain C18 (2 µ m, 50 x 2.1 mm I.D)

**Column Cat. No.** : 5020- 14352

**Eluent** : A) CH<sub>3</sub>OH  
: B) 0.5 % HCOOH in H<sub>2</sub>O  
A/B = 15/85, v/v

**Flow rate** : 0.4 mL/min

**Col. Temp.** : 40

**Detection** : LC/MS/MS (4000Q TRAP® : ESI, Positive, MRM)  
CUR CAD IS TEM GS1 GS2  
20 6 5500 600 80 70

**Injection Vol.** : 5 µL

**Sample** : Standard