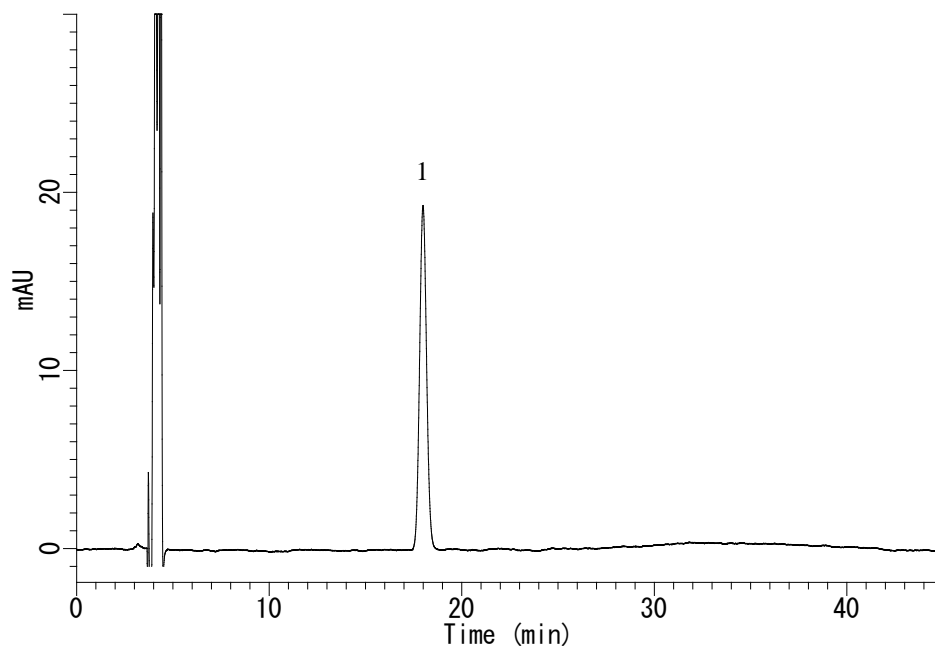


Analysis of Furosemide

(Under the Condition of the Japanese Pharmacopoeia)



Conditions

System : GL-7400 HPLC system
Column : Inertsil WP300 C18(5 μ m, 250 \times 4.6 mm I.D.)
Column Cat. No. : 5020- 05846
Eluent : A) THF
 B) H₂O
 C) CH₃COOH
 A/B/C = 30/70/1, v/v/v (premix)
Flow rate : 0.78 mL/min
Col. Temp. : 25 $^{\circ}$ C
Detection : UV 272 nm (GL-7452A PDA Detector)
Injection Vol. : 20 μ L
Sample : Standard

Analyte:

1. Furosemide 5 mg/L

Theoretical plates : 11667 > 7000 (JP 16)

Tailing factor : 1.06 < 1.5

* Diluting solution: 2.2 % CH₃COOH in (CH₃CN/H₂O = 50/50, v/v)