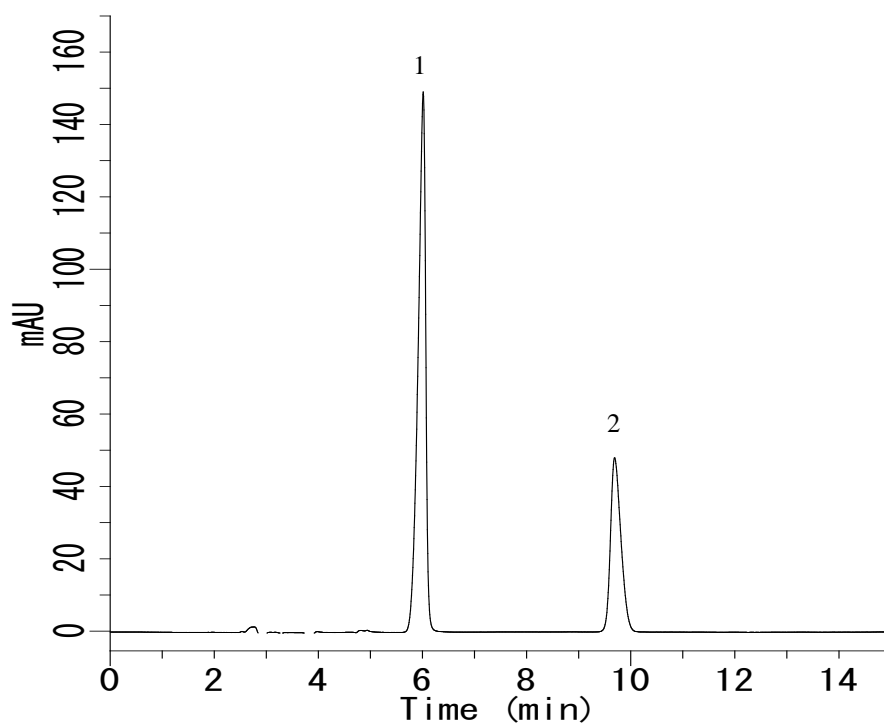


## Analysis of Potassium ferricyanide and Potassium ferrocyanide



### Conditions

**System** : GL-7400 HPLC system  
**Column** : InertSustain C18 (5  $\mu$ m, 250 x 4.6 mm I.D.)  
**Column Cat. No.** : 5020- 07346  
**Eluent** : A) CH<sub>3</sub>CN  
           B) 25 mM Na<sub>2</sub>HPO<sub>4</sub> + 10 mM Tetra-n-butylammonium bromide in H<sub>2</sub>O  
           (pH 7.0, 25 mM NaH<sub>2</sub>PO<sub>4</sub>)  
           A/B = 35/65, v/v  
**Flow rate** : 1 mL/min  
**Col. Temp.** : 40 °C  
**Detection** : UV 260 nm (GL-7452A PDA Detector)  
**Injection Vol.** : 20  $\mu$ L  
**Sample** : Standard

### Analyte:

1. Potassium ferrocyanide 100 mg/L  
 1. Potassium ferricyanide 100 mg/L