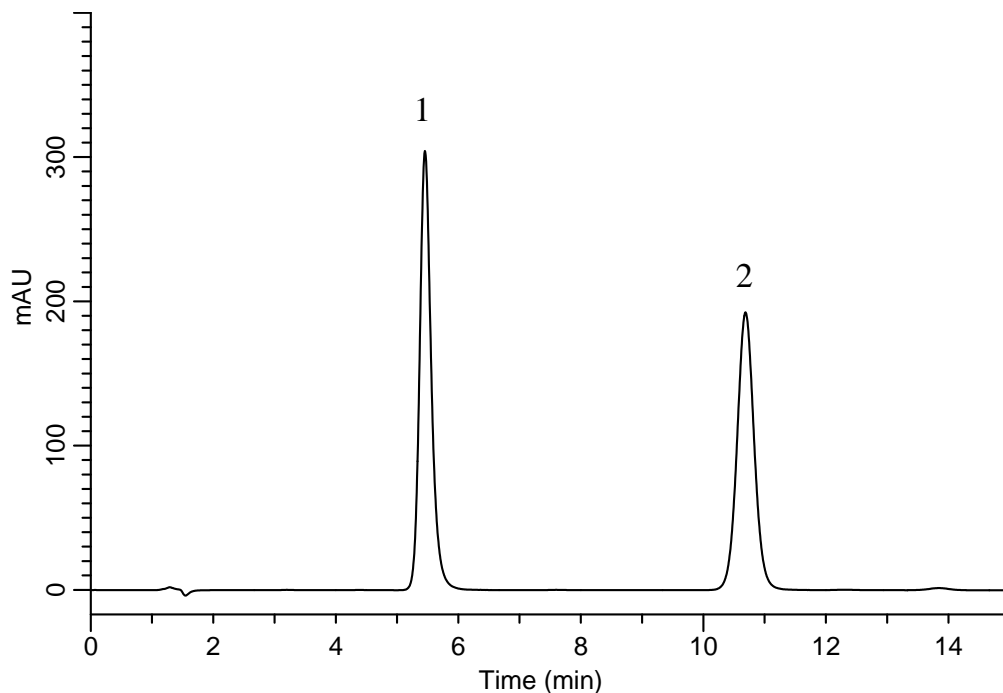


InertSearch™ for LC

Inertsil® Applications

Analysis of Losartan Potassium and Hydrochlorothiazide (Based on the Condition of United States Pharmacopeia 34-NF29)

Data No. LB019-0871



Conditions

System : GL-7400 system
Column : Inertsil C8-4 (5 μ m, 150 x 4.0 mm I.D.)
Column Cat. No. : 5020-04075
Eluent : A) CH₃CN/Buffer* = 7/93, v/v (Premix)
 B) CH₃CN
 A/B = 100/0 – 12 min – 92/8 – 16 min – 38/62
 – 2 min – 100/0 – 5 min – 100/0, v/v
Flow rate : 1.0 mL/min
Col. Temp. : 35 °C
Detection : UV 280 nm (GL-7450 UV Detector)
Injection Vol. : 20 μ L
Sample : Losartan Potassium and Hydrochlorothiazide

Analyte:

1. Hydrochlorothiazide	0.1 mg/mL
2. Losartan Potassium	0.4 mg/mL
Tailing factor of 2	: 1.62 (< 2.5)

* Buffer: 1.25 g/L of monobasic potassium phosphate and 1.5 g/L of dibasic sodium phosphate in water.