

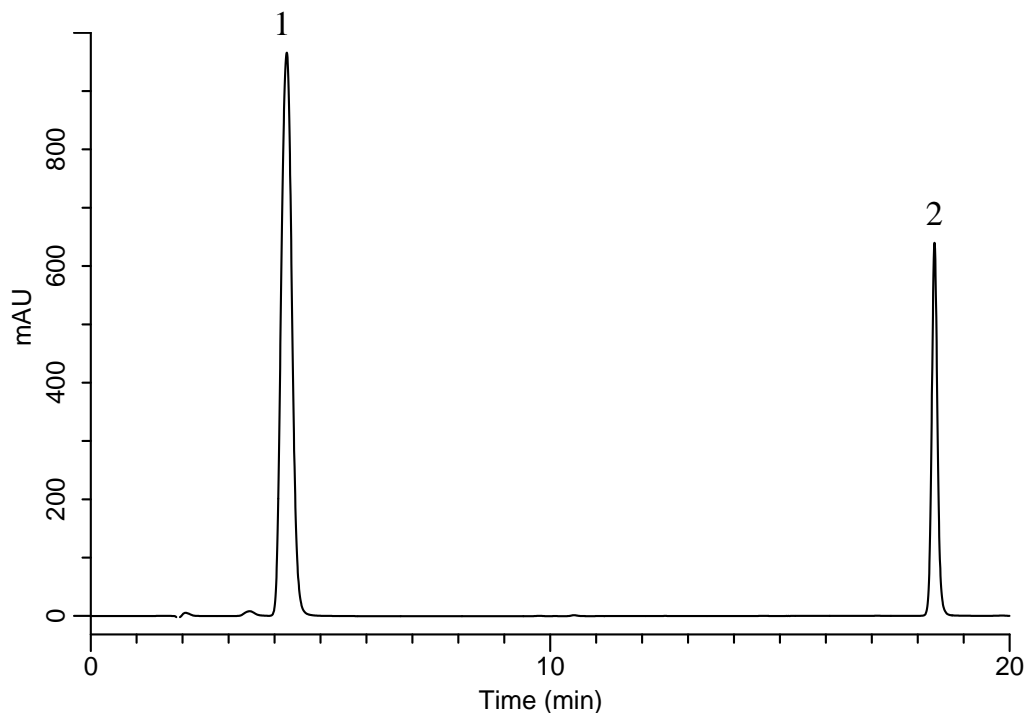
InertSearch™ for LC

Inertsil® Applications

Analysis of Valsartan and Hydrochlorothiazide

(Based on the Condition of United States Pharmacopeia 35-NF30)

Data No. LB021-0894



Conditions

System : GL-7400 HPLC system
Column : InertSustain C18 (5 μ m, 125 x 3.0 mm I.D.)
Column Cat. No. : 5020-07348
Eluent : A) CH₃CN/H₂O/TFA = 10/90/0.1, v/v/v
 : B) CH₃CN/H₂O/TFA = 90/10/0.1, v/v/v
Flow rate : 0.4 mL/min
Col. Temp. : 40 °C
Detection : UV 265 nm (GL-7452A PDA Detecor)
Injection Vol. : 10 μ L
Sample : Standard

Analyte:

1. Hydrochlorothiazide 0.2 mg/mL
2. Valsartan 0.2 mg/mL

Time(min)	A (%)	B (%)
0	90	10
25	10	90
27	90	10
40	90	10