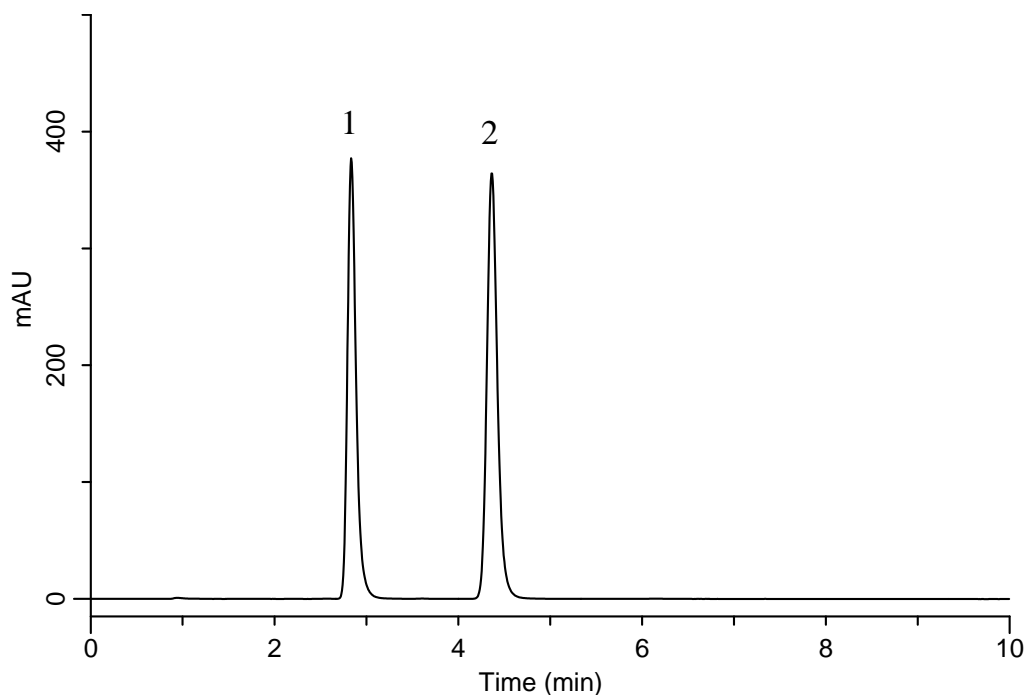


# InertSearch™ for LC

Inertsil® Applications

## Analysis of Losartan potassium and Valsartan

Data No. LB022-0894



### Conditions

**System** : GL-7400 HPLC system  
**Column** : InertSustain C18 (3  $\mu$  m, 100 x 3.0 mm I.D.)  
**Column Cat. No.** : 5020-07424  
**Eluent** : A) CH<sub>3</sub>CN  
B) 0.1 % CH<sub>3</sub>COOH in H<sub>2</sub>O  
A/B = 50/50, v/v  
**Flow rate** : 0.4 mL/min  
**Col. Temp.** : 40 °C  
**Detection** : UV 265 nm (GL-7452A PDA Detector)  
**Injection Vol.** : 5  $\mu$  L

### Analyte:

1. Losartan potassium	0.2 mg/mL
2. Valsartan	0.2 mg/mL