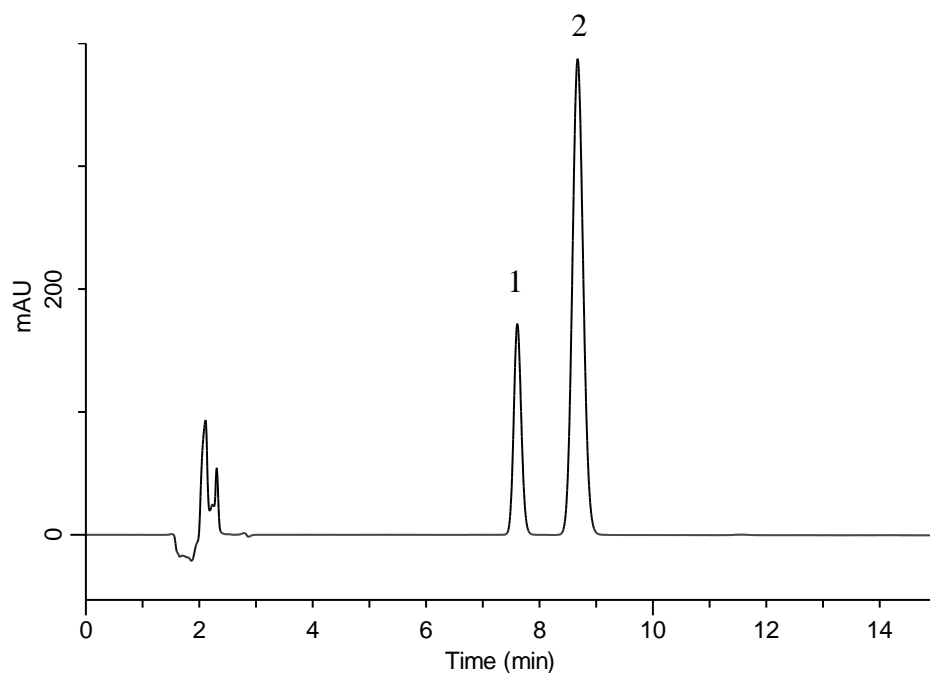


Analysis of Pitavastatin Calcium



Conditions

System : GL-7400 HPLC system
Column : InertSustain C18 (5 μ m, 250 x 4.6 mm I.D.)
Column Cat. No. : 5020-07346
Eluent : A) THF
 B) CH₃CN
 C) Citric acid buffer*
 A/B/C = 20/27/53, v/v/v (Premix)
Flow rate : 1.2 mL/min
Col. Temp. : 30 °C
Detection : UV 244 nm (GL-7452A PDA Detector)
Injection Vol. : 10 μ L

Analyte:

1. 1,3-Dinitrobenzene	0.04 mg/mL
2. Pitavastatin calcium	0.11 mg/mL

* Dissolve 10.5 g of citric acid monohydrate in 900 mL of water.
 Adjust pH 4.0 by 28 % ammonia solution.
 Add water to make 1000 mL.