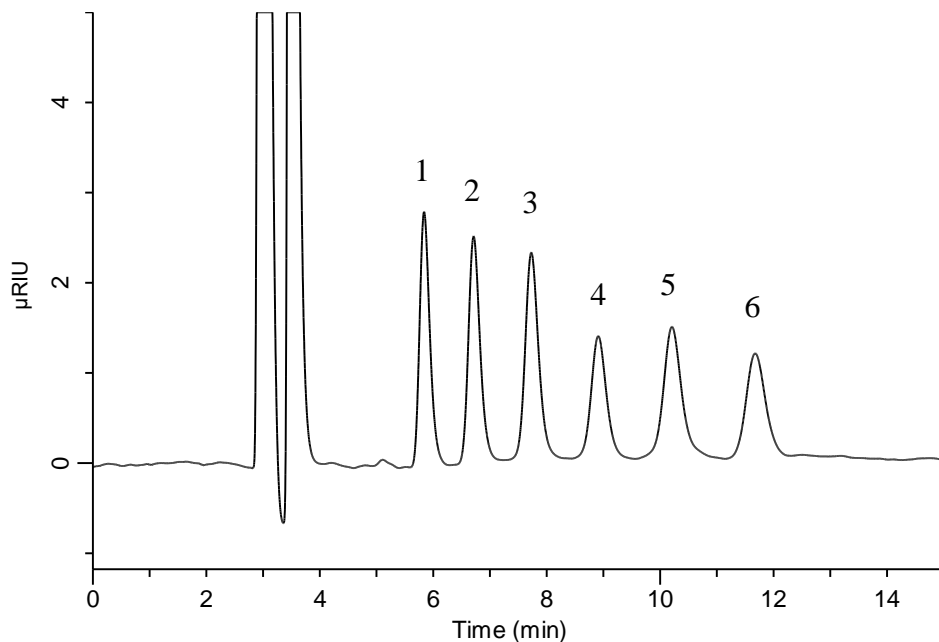


# InertSearch™ for LC

Inertsil® Applications

## Analysis of Malto oligosugars

Data No. LB032-0894



### Conditions

**System** : GL-7400 HPLC system  
**Column** : InertSustain NH2  
(5μm, 250 x 4.6 mm I.D.)  
**Column Cat. No.** : 5020-16628  
**Eluent** : A) CH<sub>3</sub>CN  
B) H<sub>2</sub>O  
A/B = 65/35, v/v (Premix)  
**Flow Rate** : 1.0 mL/min  
**Col. Temp.** : 30 °C  
**Detection** : RI (GL-7454 RI Detector)  
**Injection Vol.** : 3 uL

### Analyte:

1. Maltose	1.43 mg/mL
2. Maltotriose	1.43 mg/mL
3. Maltotetraose	1.43 mg/mL
4. Maltopentaose	1.43 mg/mL
5. Maltohexaose	1.43 mg/mL
6. Maltoheptaose	1.43 mg/mL