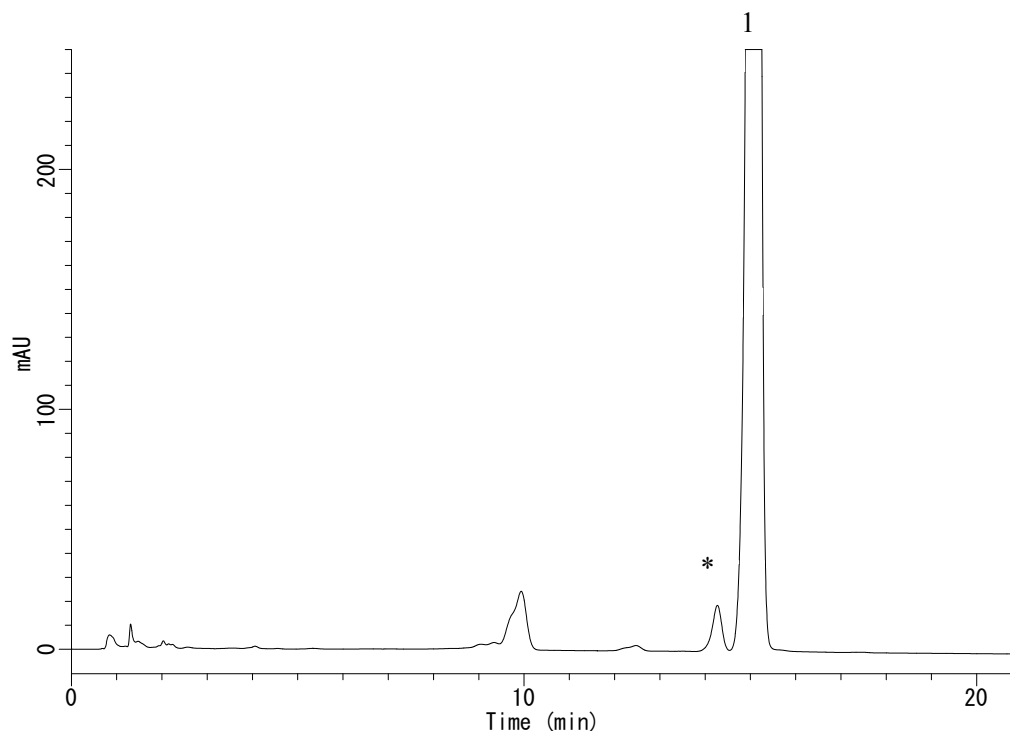


InertSearch™ for LC

Inertsil® Applications

Analysis of Terbinafine HCl (InertSustain C18) (Under the Condition of Japanese Pharmacopoeia)

Data No. LB035-0811



Conditions

System	: GL-7400 HPLC system
Column	: InertSustain C18 (5 μ m, 150 x 3.0 mm I.D.)
Column Cat. No.	: 5020-07325
Eluent	: A) (CH ₃ OH/CH ₃ CN = 3/2, v/v)/2 % Triethylamine (pH 7.5, 1 M CH ₃ COOH) = 950/50, v/v B) (CH ₃ OH/CH ₃ CN = 3/2, v/v)/2 % Triethylamine (pH 7.5, 1 M CH ₃ COOH) = 700/300, v/v A/B = 0/100 - 4 min - 0/100 - 21 min - 100/0 - 5 min - 100/0, v/v
Flow rate	: 1.0 mL/min
Col. Temp.	: 40 °C
Detection	: UV 280 nm (GL-7452A PDA detector)
Injection Vol.	: 20 μ L
Sample	: Terbinafine HCl (1000 mg/L) in 50 % CH ₃ CN (exposed to UV light (254 nm) for 1 hour)

Analyte:

1. Terbinafine Hydrochloride
- * product of ultraviolet irradiation

Resolution : 2.19 (> 2 JP16)