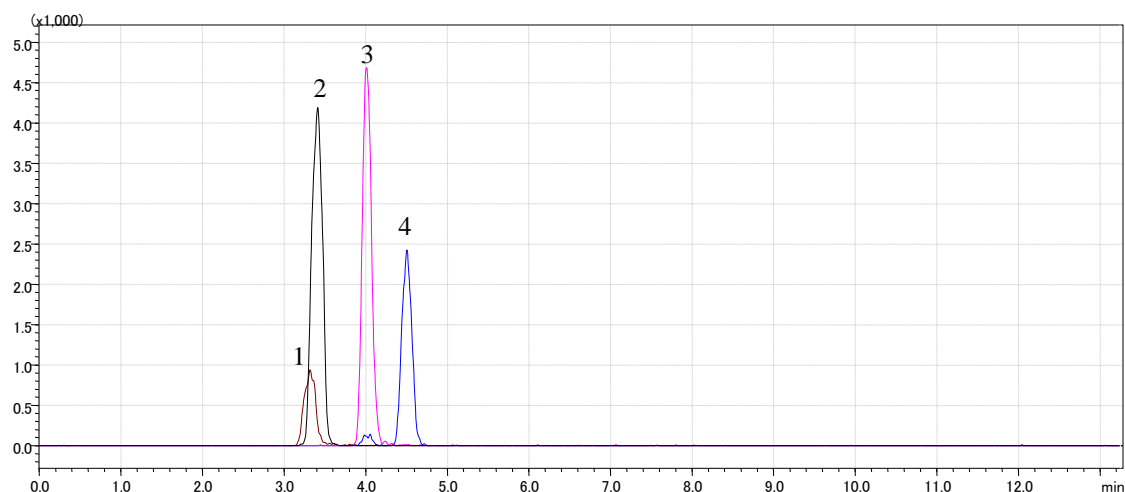


Analysis of Phospholipids (InertSustain C8)



Conditions

Column : InertSustain C8 (3 μm , 150 x 2.1 mm I.D)
Column Cat. No. : 5020- 16136
Eluent : 0.1 % HCOOH, 5 mM HCOONH₄ in CH₃OH
Flow rate : 0.2 mL/min
Col. Temp. : 40 °C
Detection : LC/MS/MS (ESI, Negative, MRM)
Injection Vol. : 2 μL
Sample : Standards

Analyte:

- | | |
|---|--------------------------|
| 1. Phosphatidyl-L-Serine (PS) | (10 $\mu\text{g/mL}$) |
| Q1: 788.20 Q3: 283.30 | |
| 2. L- α -Phosphatidyl-DL-glycerol, Distearoyl (PG) | (0.2 $\mu\text{g/mL}$) |
| Q1: 777.50 Q3: 283.25 | |
| 3. L- α -Phosphatidylcholine (PC) | (0.05 $\mu\text{g/mL}$) |
| Q1: 806.25 Q3: 283.35 | |
| 4. L- α -Phosphatidylethanolamine, Distearoyl (PE) | (0.5 $\mu\text{g/mL}$) |
| Q1: 746.40 Q3: 283.25 | |

(in CHCl₃/CH₃OH = 50/50, v/v)