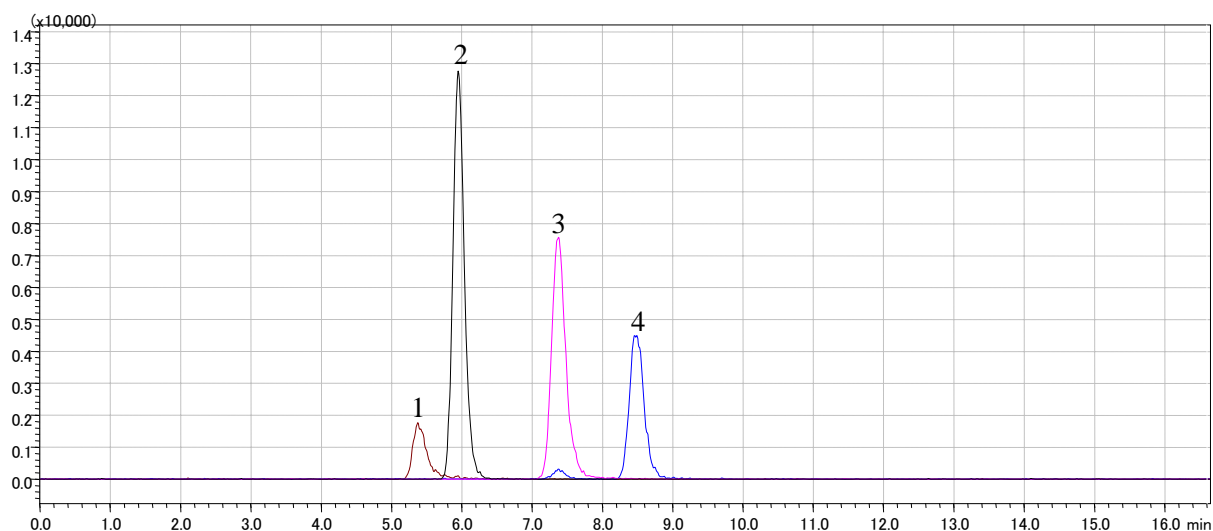


### Analysis of Phospholipids (Inertsil ODS-4)

Data No. LB041-0776



#### Conditions

**Column** : Inertsil ODS-4 (3  $\mu$  m, 150 x 2.1 mm I.D)  
**Column Cat. No.** : 5020- 04015  
**Eluent** : 0.1 % HCOOH, 5 mM HCOONH<sub>4</sub> in CH<sub>3</sub>OH  
**Flow rate** : 0.2 mL/min  
**Col. Temp.** : 40 °C  
**Detection** : LC/MS/MS (ESI, Negative, MRM)  
**Injection Vol.** : 2  $\mu$  L  
**Sample** : Standards

#### Analyte:

1. Phosphatidyl-L-Serine (PS) (10  $\mu$  g/mL)  
Q1: 788.20 Q3: 283.30
2. L-  $\alpha$  -Phosphatidyl-DL-glycerol, Distearoyl (PG) (0.2  $\mu$  g/mL)  
Q1: 777.50 Q3: 283.25
3. L-  $\alpha$  -Phosphatidylcholine (PC) (0.05  $\mu$  g/mL)  
Q1: 806.25 Q3: 283.35
4. L-  $\alpha$  -Phosphatidylethanolamine, Distearoyl (PE) (0.5  $\mu$  g/mL)  
Q1: 746.40 Q3: 283.25  
(in CHCl<sub>3</sub>/CH<sub>3</sub>OH = 50/50, v/v )